



## C-reactive protein (CRP)

**Catalog No.** PY-20091

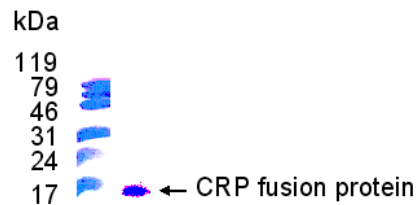
**Scale:** 1mg

**Form:** lyophilized protein

### Target description

C-reactive protein is a special type of protein produced by the liver that is only present during episodes of acute inflammation. The most important role of CRP is its interaction with the complement system, which is one of the body's immunologic defense mechanisms. Recently, new studies have suggested that CRP may also be elevated in heart attacks. The role of CRP in coronary artery disease remains unclear. It is not known whether it is merely a marker of disease or whether it actually plays a role in causing atherosclerotic disease. Many consider elevated CRP to be a positive risk factor for coronary artery disease.

### SDS PAGE analysis (Commassie blue staining)



25% SDS PAGE gel

### Products

**E. coli derived C-reactive protein (aa. 21-130) fusion protein with His tag**

### Comments

**Protein ID :** GI:17530543

**Fusion tag :** 4kDa (His-tag)

**Purity :** > 90%

**Fusion protein size :** 17 kDa

### Storage

Redissolve the powder with 1ml sterile water will restore to the original concentration 1mg/ml. For long-term storage at -20°C. Aliquot to avoid repeated freezing and thawing.

### Application

Dilute with 1XPBS for Western blot, ELISA test antigen, Immunogen