



CITED2

Catalog No. PY-20073

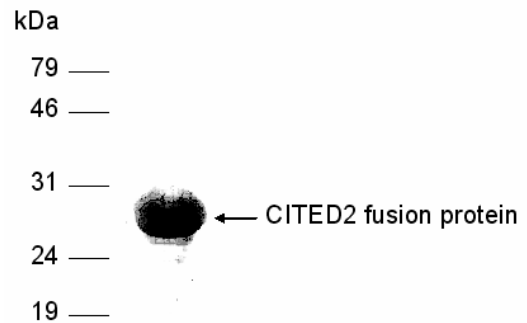
Scale: 1 mg

Form: lyophilized protein

Target description

CITED2 (CBP/p300-interacting transactivator with ED-rich tail 2) is a member of the Cited family of nuclear regulators, previously known as *mrg1* (melanocyte-specific gene-related gene 1). CITED2 is inducible by varying stimuli including lipopolysaccharide, hypoxia, and cytokines such as interleukin 9 and interferon γ .

SDS PAGE analysis (Commassie blue staining)



20% SDS PAGE gel

Products

E. coli derived CITED2 (aa. 1-160) fusion protein with His tag

Comments

Protein ID : GI:13325127

Fusion tag : 4kDa (His-tag)

Purity : > 90%

Fusion protein size : 26 kDa

Storage

Redissolve the powder with 1ml sterile water will restore to the original concentration 1mg/ml. For long-term storage at -20°C . Aliquot to avoid repeated freezing and thawing.

Application

Dilute with 1XPBS for Western blot, ELISA test antigen, Immunogen

FOR RESEARCH USE ONLY AND NOT INTENDED FOR DIAGNOSTIC OR THERAPEUTIC USE