



KLF7

Catalog No. PY-20072

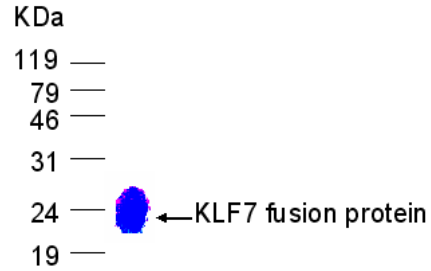
Scale: 1mg

Form: lyophilized protein

Target description

The Krüppel-like transcription factors (KLFs) are important regulators of cell proliferation and differentiation in several different organ systems. KLF7 was originally identified during a PCR-based search of novel KLF transcripts and found to be broadly expressed at low levels in adult tissues, hence the early name of UKLF, for ubiquitous KLF. Subsequent gene expression studies of the developing mouse revealed that accumulation of *Klf7* transcript is restricted to postmitotic neuroblasts of the developing central (CNS) and peripheral nervous systems. Postnatal *Klf7* expression was instead found to remain constitutively high only in the DRG, cerebellum, and olfactory system.

SDS PAGE analysis (Commassie blue staining)



20% SDS PAGE gel

Products

E. coli derived KLF7 (aa. 80-230) fusion protein with His tag

Comments

Protein ID : GI:15341759

Fusion tag : 4kDa (His-tag)

Purity : > 90%

Fusion protein size : 22 kDa

Storage

Redissolve the powder with 1ml sterile water will restore to the original concentration 1mg/ml. For long-term storage at -20°C. Aliquot to avoid repeated freezing and thawing.

Application

Dilute with 1XPBS for Western blot, ELISA test antigen, Immunogen