



c-Met

Catalog No. PY-20067

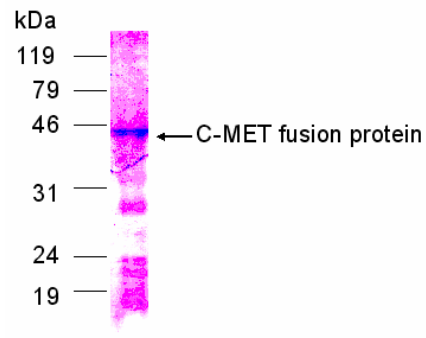
Scale: 1 mg

Form: lyophilized protein

Target description

C-Met is a receptor tyrosine kinase that has been shown to be overexpressed and/or mutated in a variety of malignancies. A number of c-Met activating mutations, many of which are located in the tyrosine kinase domain, have been detected in various solid tumors and have been implicated in invasion and metastasis of tumor cells. It is known that stimulation of c-Met via its natural ligand, hepatocyte growth factor (also known as scatter factor, HGF/SF) results in a plethora of biological and biochemical effects in the cell. Activation of c-Met signaling can lead to scattering, angiogenesis, proliferation, enhanced cell motility, invasion, and eventual metastasis.

SDS PAGE analysis (Commassie blue staining)



20% SDS PAGE gel

Products

E. coli derived c-Met (aa. 1-300) fusion protein with His tag

Comments

Protein ID : GI:42741655

Fusion tag : 4kDa (His-tag)

Purity : > 70%

Fusion protein size : 43 kDa

Storage

Redissolve the powder with 1ml sterile water will restore to the original concentration 1mg/ml. For long-term storage at -20°C. Aliquot to avoid repeated freezing and thawing.

Application

Dilute with 1XPBS for Western blot, ELISA test antigen, Immunogen