



Anti- Fibronectin, Chicken-Polyclonal Antibody

Catalog No. PY-10299 **Quantity:** 1mg **Applications tested:** ELISA
Antigen species: Human **Reactivity:** Human, mouse, rat
Host species: Chicken **Form:** Total IgY Antibody

Target description

Cell matrix protein. M.W: 440,000. Fibronectins bind cell surfaces and various compounds including collagen, fibrin, heparin, DNA and actin, Fibronectin are involved in cell adhesion, cell motility, opsonization, wound healing, and maintenance of cell shape.

Antigen

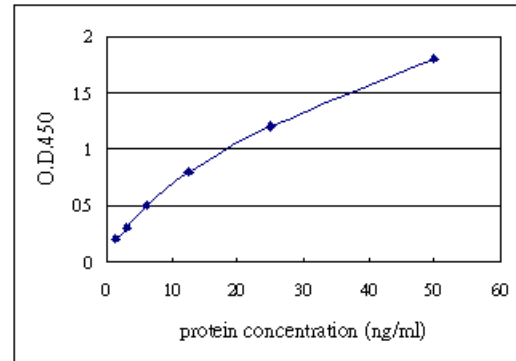
This polyclonal antibody was raised by immunizing chicken with human fibronectin plasma protein that be derived by *E. coli*.

Application

Western blotting, ELISA. Recommended starting dilution for Western blot analysis is 1:5000, for ELISA coating is 50-100ug/ml. Optimal working dilutions must be determined by the end user.

Related Products

1. Anti-GH, pAb (PY-10103)
2. Anti-Insulin, pAb (PY-10104)
3. Anti-Albumin, pAb(PY-10105)
4. Anti-CRP, pAb(PY-10106)
5. Anti-IgE, pAb (PY-10111)



Direct ELISA Test:

Plasma-derived protein as test antigen. Anti-Fibronectin total IgY as primary antibody (2 ug/ml), and Rabbit anti-IgY-HRP as 2nd antibody.

Storage

It is supplied as total IgY in lyophilized powder. Redissolve the powder with 100 microliter sterile water will restore to the original concentration 10mg/ml (1xPBS). Store at 4°C for short-term application. For long-term storage, aliquot and store at -20°C.

References

1. Kornblihtt,A.R., Umezawa,K., Vibe-Pedersen,K. and Baralle,F.E. Primary structure of human fibronectin: differential splicing may generate at least 10 polypeptides from a single gene *EMBO J.* 4 (7), 1755-1759 (1985).

FOR RESEARCH USE ONLY AND NOT INTENDED FOR DIAGNOSTIC OR THERAPEUTIC USE