



Anti-Human CD44, Chicken-Polyclonal Antibody

Catalog No. PY-10296
Antigen species: Human
Host species: Chicken

Quantity: 100µg
Reactivity: Human
Form: Antigen affinity purified antibody

Applications tested: WB, IHC

Target description

CD44 is a main cell surface receptor for hyaluronate. Adhesion to mucosal high endothelial venule and to types I and VI collagen. Probably involved in matrix adhesion, lymphocyte activation and lymph node homing.

Antigen

This polyclonal antibody was raised by immunizing chicken with E. coli derived protein (361-540 amino acids).

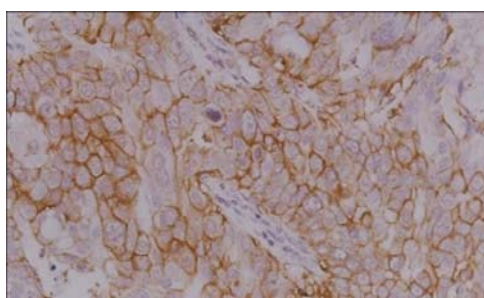
Application

Western blotting, tissue or cell immunostaining. Recommended starting dilution for Western blot analysis is 1:500, for tissue or cell staining is 1:200. Optimal working dilutions must be determined by the end user.

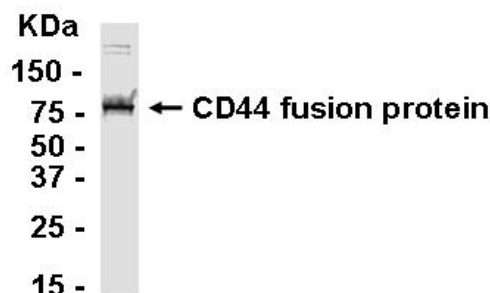
Related Products

1. Anti-HCCR-1(183-330) pAb (PY-10283).

DAB Method Tissue Staining:



CD44, 1DC



Western Blot Protocol:

1. Block membrane with 5% non-fat milk in PBS-T for 1 hour at room temperature or longer at 4°C.
2. Incubate membrane with IgY antibodies at dilution of 1:2,000 with 1% milk in PBS-T at R.T. for 1 h.
3. Rinse 3 times with PBS-T, then wash membrane with PBS-T, 5 min each, total of 3 times.
4. Incubate with 2nd antibody (goat-anti-IgY/Fc-HRP) at dilution 1:1,000 for ECL (with 1% milk PBS-T) at R.T. for 1h.
5. Rinse 3 times with PBS-T, then wash with PBS-T, 5 min each with shaking, total of 3 times.
6. Perform ECL detection of signal using Pierce ECL kit.

Storage

It is supplied as antigen affinity purified antibody in lyophilized powder. Redissolve the powder with 100 microliter sterile water will restore to the original concentration 1mg/ml (1xPBS). Store at 4°C for short-term application. For long-term storage, aliquot and store at -20°C.

References

1. Cywes, C.; Wessels, M. R. : Group A Streptococcus tissue invasion by CD44-mediated cell signalling. *Nature* 414: 648-652, 2001.