



## Anti- Troponin I (49-92), Chicken-Polyclonal Antibody

**Catalog No.** PY-10269

**Antigen species:** Human

**Host species:** Chicken

**Quantity:** 100 $\mu$ g

**Reactivity:** Human, chicken

**Form:** Antigen affinity purified antibody

**Applications:** Western Blot

### Target description

Cardiac troponin I levels are a risk factor for mortality and multiple organ failure in noncardiac critically ill patients and have an additive effect to the APACHE II score in outcome prediction.

### Antigen

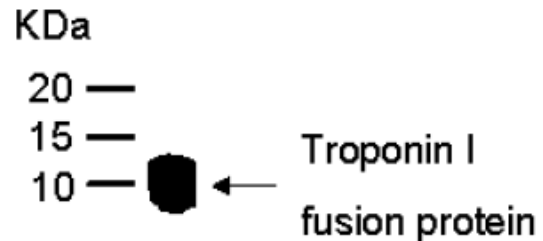
This polyclonal antibody was raised by immunizing chicken with human cardiac troponin I (49-92 amino acids) fusion protein.

### Application

Western blotting, tissue or cell immunostaining. Recommended starting dilution for Western blot analysis is 1:2000, for tissue or cell staining is 1:150. Optimal working dilutions must be determined by the end user.

### Related Products

1. Anti-Troponin I (8-35), chicken pAb (PY-10206)
2. Anti-Troponin I (93-122), chicken pAb (PY-10270)



### Western blot Protocol

1. Block membrane with 5% non-fat milk in PBS-T for 1 hour at room temperature or longer at 4°C.
2. Incubate membrane with IgY antibodies at dilution of 1: 3,000 with 1% milk in PBS-T at R.T. for 1 h.
3. Rinse 3 times with PBS-T, then wash membrane with PBS-T, 5 min each, total of 3 times.
4. Incubate with 2nd antibody (goat-anti-IgY/Fc-HRP) at dilution 1:10,000 for ECL (with 1% milk PBS-T) @ R.T. for 1 h.
5. Rinse 3 times with PBS-T, then wash with PBS-T, 5 min each with shaking, total of 3 times.
6. Perform ECL detection of signal using Pierce ECL kit.

### Storage

It is supplied as antigen affinity purified antibody in lyophilized powder. Redissolve the powder with 100 microliter sterile water will restore to the original concentration 1mg/ml (1 $\times$ PBS). Store at 4°C for short-term application. For long-term storage, aliquot and store at -20°C.

### References

1. Barta, J., Toth, A., Jaquet, K., Redlich, A., Edes, I. and Papp, Z. Calpain-1-dependent degradation of troponin I mutants found in familial hypertrophic cardiomyopathy. *Mol. Cell. Biochem.* 251 (1-2), 83-88 (2003)