



Anti-Alpha-1-fetoprotein(AFP), Chicken-Polyclonal Antibody

Catalog No. PY-10264

Antigen species: Human

Host species: Chicken

Quantity: 100µg

Reactivity: Human

Form: Antigen affinity purified antibody

Applications tested: Western blot

Target description

Alpha-fetoprotein is a major plasma protein produced by the yolk sac and the liver during fetal life. Alpha-fetoprotein expression in adults is often associated with hepatoma or teratoma. However, hereditary persistence of alpha-fetoprotein may also be found in individuals with no obvious pathology. The protein is thought to be the fetal counterpart of serum albumin, and the alpha-fetoprotein and albumin genes are present in tandem in the same transcriptional orientation on chromosome 4. Alpha-fetoprotein is found in monomeric as well as dimeric and trimeric forms, and binds copper, nickel, fatty acids and bilirubin. The level of alpha-fetoprotein in amniotic fluid is used to measure renal loss of protein to screen for spina bifida and anencephaly.

Antigen

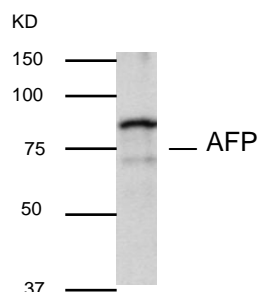
This polyclonal antibody was raised by immunizing chicken with human alpha-fetoprotein precursor protein(180-420 amino acids).

Application

Western blotting, tissue or cell immunostaining. Recommended starting dilution for Western blot analysis is 1:500, for tissue or cell staining is 1:100. Optimal working dilutions must be determined by the end user.

Related Products

1. Anti-TEM1 pAb (GB-10374).
2. Anti-TEM2 pAb (GB-30131).
3. Anti-TEM3 pAb (GB-30132).
4. Anti-TEM4 pAb (GB-30133).
5. Anti-TEM5 pAb (GB-10011).



Western Blot Protocol:

1. Block membrane with 5% non-fat milk in PBS-T for 1 hour at room temperature or longer at 4°C.
2. Incubate membrane with IgY antibodies at dilution of 1: 2,000 with 1% milk in PBS-T at R.T. for 1 h.
3. Rinse 3 times with PBS-T, then wash membrane with PBS-T, 5 min each, total of 3 times.
4. Incubate with 2nd antibody (goat-anti-IgY/Fc-HRP) at dilution 1:1,000 for ECL (with 1% milk PBS-T) at R.T. for 1h.
5. Rinse 3 times with PBS-T, then wash with PBS-T, 5 min each with shaking, total of 3 times.
6. Perform ECL detection of signal using Pierce ECL kit.

Storage

It is supplied as antigen affinity purified antibody in lyophilized powder. Redissolve the powder with 100 microliter sterile water will restore to the original concentration 1mg/ml (1×PBS). Store at 4°C for short-term application. For long-term storage, aliquot and store at -20°C.

References

Stefanova I *et al.* Monoclonal antibodies against human alpha-fetoprotein. Exploitation of an unusual calcium-dependent interaction with the antigen for analytical and preparative purposes. *J Immunol Methods* 111:67-73 (1988).