



Anti-Chemokine(C-X-C motif) ligand 11(CXCL11), Chicken-Polyclonal Antibody

Catalog No. PY-10260
Antigen species: Human
Host species: Chicken

Quantity: 100µg
Reactivity: Human
Form: Antigen affinity purified antibody

Applications: Western Blot, IHC

Target description

Small inducible cytokine B11 precursor; small inducible cytokine subfamily B (Cys-X-Cys), member 9B; small inducible cytokine subfamily B (Cys-X-Cys), member 11. This protein is a CXC member of the chemokine superfamily. It induces a chemotactic response in activated T-cells and is the dominant ligand for CXC receptor-3. The gene encoding this protein contains 4 exons and at least three polyadenylation signals which might reflect cell-specific regulation of expression. IFN-gamma is a potent inducer of transcription of this gene.

Antigen

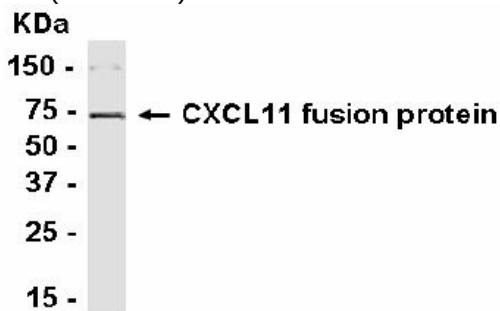
This polyclonal antibody was raised by immunizing chicken with the CXC member of the chemokine superfamily fusion protein (22~85 amino acids).

Application

Western blotting, tissue or cell immunostaining. Recommended starting dilution for Western blot analysis is 1:3000(ECL method), for tissue or cell staining is 1: 200. Optimal working dilutions must be determined by the end user.

Related Products

1. Anti-Amyloid β (1-40), rabbit pAb (GB-10536)
2. Anti-Amyloid β (37-42), rabbit pAb (GB-10370)
3. Anti-human fibrinogen , rabbit pAb (PG-10006)
4. Anti-Taxol , rabbit pAb (PG-10007)
5. Anti-Troponin I (TNNI3), chicken pAb (PY-10206)

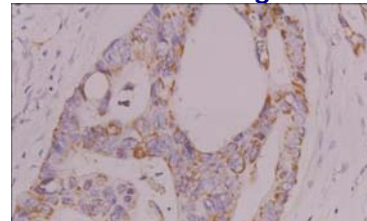


E. coli derived protein as test antigen.

Western blot Protocol

1. Block membrane with 5% non-fat milk in PBS-T for 1 hour at room temperature or longer at 4°C.
2. Incubate membrane with IgY antibodies at dilution of 1: 2,000 with 1% milk in PBS-T at R.T. for 1 h.
3. Rinse 3 times with PBS-T, then wash membrane with PBS-T, 5 min each, total of 3 times.
4. Incubate with 2nd antibody (goat-anti-IgY/Fc-HRP) at dilution 1: 1,000 for ECL (with 1% milk PBS-T) at R.T. for 1 h.
5. Rinse 3 times with PBS-T, then wash with PBS-T, 5 min each with shaking, total of 3 times.
6. Perform ECL detection of signal using Pierce ECL kit.

DAB method Tissue staining:



CXCL11 (1: 100), Prostate cancer.

Storage

It is supplied as antigen affinity purified antibody in lyophilized powder. Redissolve the powder with 100 microliter sterile water will restore to the original concentration 1mg/ml (1×PBS). Store at 4°C for short-term application. For long-term storage, aliquot and store at -20°C.

References

1. Mohan, K., Ding, Z., Hanly, J. and Issekutz, T.B. IFN-gamma-inducible T cell alpha chemoattractant is a potent stimulator of normal human blood T lymphocyte transendothelial migration: differential regulation by IFN-gamma and TNF-alpha. *J. Immunol.* 168 (12), 6420-6428 (2002)