



Anti-V-erb-b2 erythroblastic leukemia viral oncogene homolog 2 (a.a.153-433), Chicken-Polyclonal Antibody

Catalog No. PY-10254

Antigen species: Human

Host species: Chicken

Quantity: 100µg

Reactivity: Human, mouse, rat

Form: Antigen affinity purified antibody

Applications: Western Blot, IHC, ICC

Target description

v-erb-b2 erythroblastic leukemia viral oncogene homolog 2, neuro/glioblastoma derived oncogene homolog; NEU, NGL, HER2, TKR1, HER-2, ERBB2.

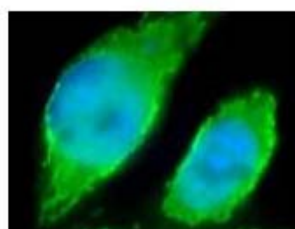
Tyrosine kinase receptor, a component of IL-6 signalling through the MAP kinase pathway; similar to the EGF receptor.

Antigen

This polyclonal antibody was raised by immunizing chicken with *E coli*-derived fusion protein (human Her2: aa153-433).

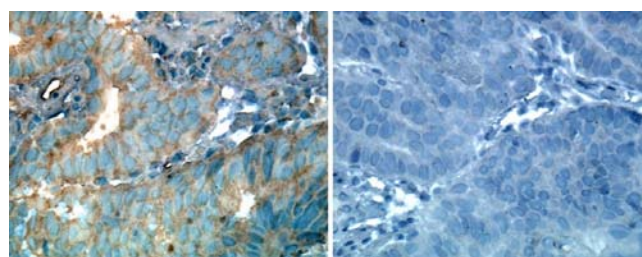
Application

Western blotting, tissue or cell immunostaining. Recommended starting dilution for Western blot analysis is 1:1000, for cell staining is 1:500 and IHC staining is 1:100. Optimal working dilutions must be determined by the end user.



Immunocytochemistry Staining:

Endogenous HER2 in human breast cancer cell line SKBR3. Affi-anti-HER2 IgY dilution: 1:1000; Goat anti-IgY Fc-FITC: 1:200. (Data provided by Yan Xiao & Peter E. Barker, NIST)



Related Products

1. Anti-VEGFR3, pAb (GB-30015)
2. Anti-Vascular endothelial growth factor (VEGF), pAb (GB-10050)
3. Anti-Vascular endothelial growth factor (VEGF), pAb (PY-10031)
4. Anti-v-erb-b2 erythroblastic leukemia viral oncogene homolog 2 (Her2/neu a.a.146-195), pAb (PY-10256)
5. Anti-Erythropoietin(EPO),pAb (PY-10218)



E coli-derived fusion protein as test antigen.

Western Blot protocol:

1. Block membrane with 5% non-fat milk in PBS-T for 1 hour at room temperature or longer at 4°C.
2. Incubate membrane with IgY antibodies at dilution of 1: 2,000 with 1% milk in PBS-T at R.T. for 1 h.
3. Rinse 3 times with PBS-T, then wash membrane with PBS-T, 5 min each, total of 3 times.
4. Incubate with 2nd antibody (goat-anti-IgY/Fc-HRP) at dilution 1: 1,000 for ECL (with 1% milk PBS-T) at R.T. for 1 h.
5. Rinse 3 times with PBS-T, then wash with PBS-T, 5 min each with shaking, total of 3 times.
6. Perform ECL detection of signal using Pierce ECL kit.

Immunohistochemistry Staining:

Anti-HER2 IgY staining of Formalin-fixed and paraffin-embedded Esophageal Cancer tissue. Affi-pure IgY dilution: 1:100, Rabbit anti-IgY-Biotin dilution: 1:300. (Courtesy of Jessica Wang-Rodriguez MD, UCSD & VA San Diego Healthcare System.)

Storage

It is supplied as antigen affinity purified antibody in lyophilized powder. Redissolve the powder with 100 microliter sterile water will restore to the original concentration 1mg/ml (1×PBS). Store at 4°C for short-term application. For long-term storage, aliquot and store at -20°C.

References

1.Cho, H.-S., Mason, K., Ramyar, K.X., Stanley, A.M., Gabelli, S.B., Denney, D.W., Jr., Leahy, D.J. Structure of the extracellular region of HER2 alone and in complex with the Herceptin Fab. *Nature* 421: 756-760, 2003.

FOR RESEARCH USE ONLY AND NOT INTENDED FOR DIAGNOSTIC OR THERAPEUTIC USE