



Anti-Melanoma antigen, family A, 8 (MAGE8), Chicken-Polyclonal Antibody

Catalog No. PY-10239

Antigen species: Human

Host species: Chicken

Quantity: 100 μ g

Reactivity: Human

Form: Antigen affinity purified antibody

Applications: Western Blot, IHC

Target description

The MAGEA genes are expressed at a high level in a number of tumors of various histologic types, and are silent in normal tissues with the exception of testis and placenta. The MAGEA genes are clustered on chromosome Xq28. They may be implicated in some hereditary disorders, such as dyskeratosis congenita.

Antigen

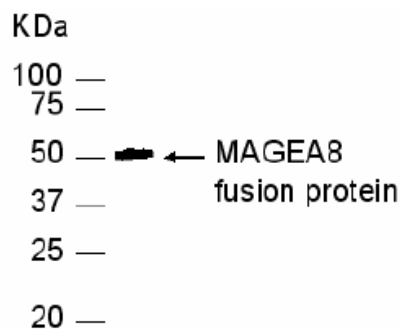
This polyclonal antibody was raised by immunizing chicken with human MAGE8 fusion protein (full length).

Application

Western blotting, tissue staining. Recommended starting dilution for Western blot analysis is 1:3000, for IHC staining is 1:200. Optimal working dilutions must be determined by the end user.

Related Products

1. Anti-Amyloid β (1-40), rabbit pAb (GB-10536)
2. Anti-Amyloid β (37-42), rabbit pAb (GB-10370)
3. Anti-human fibrinogen, rabbit pAb (PG-10006)
4. Anti-Taxol, rabbit pAb (PG-10007)
5. Anti-Troponin I (TNNI3), chicken pAb (PY-10206)

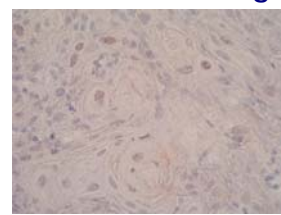


E. coli-derived fusion protein as test antigen.

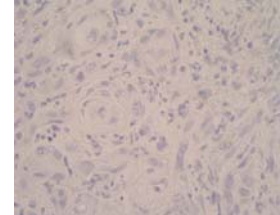
Western blot Protocol

1. Block membrane with 5% non-fat milk in PBS-T for 1 hour at room temperature or longer at 4°C.
2. Incubate membrane with IgY antibodies at dilution of 1: 5,000 with 1% milk in PBS-T at R.T. for 1 h.
3. Rinse 3 times with PBS-T, then wash membrane with PBS-T, 5 min each, total of 3 times.
4. Incubate with 2nd antibody (goat-anti-IgY/Fc-HRP) at dilution 1:10,000 for ECL (with 1% milk PBS-T) at R.T. for 1 h.
5. Rinse 3 times with PBS-T, then wash with PBS-T, 5 min each with shaking, total of 3 times.
6. Perform ECL detection of signal using Pierce ECL kit.

AEC Tissue Staining:



Oral cancer-
MAGE8 (1: 150)



Oral cancer-
MAGE8-negative

Storage

It is supplied as antigen affinity purified antibody in lyophilized powder. Redissolve the powder with 100 microliter sterile water will restore to the original concentration 1mg/ml (1 \times PBS). Store at 4°C for short-term application. For long-term storage, aliquot and store at -20°C.

References

1. De Plaen, E., Arden, K., Traversari, C., Gaforio, J.J., Szikora, J.P., De Smet, C., Brasseur, F., van der Bruggen, P., Lethe, B., Lurquin, C., et al. Structure, chromosomal localization, and expression of 12 genes of the MAGE family. *Immunogenetics*. 1994; 40(5):360-9.
2. Rogner, U.C., Wilke, K., Steck, E., Korn, B., Poustka, A. The melanoma antigen gene (MAGE) family is clustered in the chromosomal band Xq28. *Genomics*. 1995 Oct 10; 29(3):725-31.