



Anti-Adiponectin 1 (a.a.72-245), Chicken-Polyclonal Antibody

Catalog No. PY-10207

Antigen species: Human

Host species: Chicken

Quantity: 100 μ g

Reactivity: Human

Form: Antigen affinity purified antibody

Applications tested: Western blot

Target description

Adiponectin is an adipose tissue-specific protein that has structural homology to collagen VIII and X and complement factor C1q, and that circulates in human plasma at high levels. A reduction in adiponectin expression is associated with insulin resistance in animal models. Administration of adiponectin has been accompanied by a reduction in plasma glucose and an increase in insulin sensitivity.

Antigen

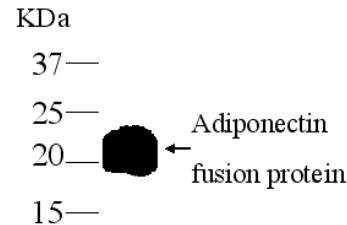
This polyclonal antibody was raised by immunizing chicken with human Adiponectin fusion protein (72-245 amino acids).

Application

Western blotting, tissue or cell immunostaining. Recommended starting dilution for Western blot analysis is 1: 3,000, for tissue or cell staining is 1: 200.

Related Products

1. Anti-Adiponectin (1-72), Chicken-poly (PY-10204)
2. Anti-Adiponectin (72-245), Rabbit-poly (PY-10210)



Western blot Protocol

1. Block membrane with 5% non-fat milk in PBS-T for 1 hour at room temperature or longer at 4°C.
2. Incubate membrane with IgY antibodies at dilution of 1: 3,000 with 1% milk in PBS-T at R.T. for 1 h.
3. Rinse 3 times with PBS-T, then wash membrane with PBS-T, 5 min each, total of 3 times.
4. Incubate with 2nd antibody (goat-anti-IgY/Fc-HRP) at dilution 1: 10,000 for ECL (with 1% milk PBS-T) at R.T. for 1 h.
5. Rinse 3 times with PBS-T, then wash with PBS-T, 5 min each with shaking, total of 3 times.
6. Perform ECL detection of signal using Pierce ECL kit.

Storage

It is supplied as antigen affinity purified antibody in lyophilized powder. Redissolve the powder with 100 microliter sterile water will restore to the original concentration 1mg/ml (1xPBS). Store at 4°C for short-term application. For long-term storage, aliquot and store at -20°C.

References

1. Sasaki, H., Yoshioka, N., Takagi, Y. and Sakaki, Y. Structure of the chromosomal gene for human serum prealbumin. Gene 37 (1-3), 191-197 (1985)

FOR RESEARCH USE ONLY AND NOT INTENDED FOR DIAGNOSTIC OR THERAPEUTIC USE