



Anti-Extracellular signal-regulated kinase 1 (ERK1), Chicken-Polyclonal Antibody

Catalog No. PY-10201
Antigen species: Human
Host species: Chicken

Quantity: 100µg
Reactivity: Human
Form: Antigen affinity-purified antibody

Application: ELISA

Target description

This protein belongs to the Ser/Thr family of protein kinases, MAP kinase subfamily. It phosphorylates microtubule-associated protein-2 (map2), myelin basic protein (mbp), and elk-1; may promote entry in the cell cycle.

Antigen

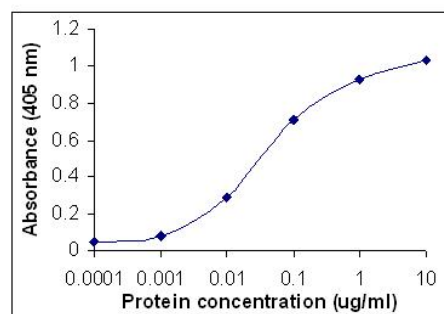
This polyclonal antibody was raised by immunizing chicken with ERK1 (11-28 amino acids).

Application

Western blotting, tissue or cell immunostaining. Recommended starting dilution for Western blot analysis is 1: 500, for tissue or cell staining is 1: 200. Optimal working dilutions must be determined by the end user.

Related Products

1. Anti-Extracellular signal-regulated kinase 3(ERK3), Chicken pAb (PY-10188)



Free peptide as test antigen.

Direct ELISA:

Affi-pure IgY as primary antibody (0.1µg/ml) and Goat anti-IgY HRP as 2nd antibody.

Storage

It is supplied as antigen affinity purified antibody in lyophilized powder. Redissolve the powder with 100 microliter sterile water will restore to the original concentration 1mg/ml (1×PBS). Store at 4°C for short-term application. For long-term storage, aliquot and store at -20°C.

References

1. Forcet, C., Stein, E., Pays, L., Corset, V., Llambi, F., Tessier-Lavigne, M., Mehlen, P. Netrin-1-mediated axon outgrowth requires deleted in colorectal cancer-dependent MAPK activation. *Nature* 417: 443-447, 2002.

FOR RESEARCH USE ONLY AND NOT INTENDED FOR DIAGNOSTIC OR THERAPEUTIC USE