



Anti-Methyl-CpG binding domain protein 2 isoform 1 (MBD2), Chicken-Polyclonal Antibody

Catalog No. PY-10189

Quantity: 100µg

Applications tested: ELISA

Antigen species: Human

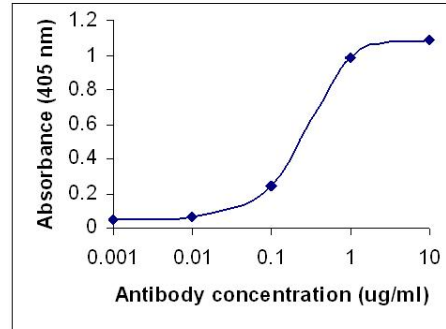
Reactivity: Human, Mouse

Host species: Chicken

Form: Antigen affinity purified antibody

Target description

DNA methylation is the major modification of eukaryotic genomes and plays an essential role in mammalian development. Human proteins MECP2, MBD1, MBD2, MBD3, and MBD4 comprise a family of nuclear proteins related by the presence in each of a methyl-CpG binding domain (MBD). Each of these proteins, with the exception of MBD3, is capable of binding specifically to methylated DNA. MECP2, MBD1 and MBD2 can also repress transcription from methylated gene promoters. MBD2 may function as mediators of the biological consequences of the methylation signal. It is also reported that the MBD2 protein functions as a demethylase to activate transcription, as DNA methylation causes gene silencing.



Direct ELISA Test:

Free peptide as test antigen. Affi-pure IgY as primary antibody and Rabbit anti-IgY HRP as 2nd antibody.

Antigen

This polyclonal antibody was raised by immunizing chicken with MBD2 peptide (11-27 amino acids).

Application

Western blotting, tissue or cell immunostaining. Recommended starting dilution for Western blot analysis is 1:500, for tissue or cell staining is 1:200. Optimal working dilutions must be determined by the end user.

Related Products

1. Anti-Cytokeratin 8 (KRT8), Chicken pAb (PY-10149).
2. Anti-Cytokeratin 18 (KRT18), Chicken pAb (PY-10150).
3. Anti- Toll-like receptor 2 (TLR2), Chicken pAb (PY-10152)
4. Anti- Toll-like receptor 3 (TLR3), Chicken pAb (PY-10154)
5. Anti- Toll-like receptor 7 (TLR7), Chicken pAb (PY-10148)

Storage

It is supplied as antigen affinity purified antibody in lyophilized powder. Redissolve the powder with 100 microliter sterile water will restore to the original concentration 1mg/ml (1×PBS). Store at 4°C for short-term application. For long-term storage, aliquot and store at -20°C.

References

Bhattacharya, S.K., Ramchandani, S., Cervoni, N. and Szyf, M. A mammalian protein with specific demethylase activity for mCpG DNA. *Nature* 397 (6720), 579-583 (1999).