



## Anti-Glycogen synthase kinase 3 alpha (GSK-3A), Chicken-Polyclonal Antibody

**Catalog No.** PY-10187  
**Antigen species:** Human  
**Host species:** Chicken

**Quantity:** 100µg      **Applications tested:** ELISA  
**Reactivity:** Human, Rat  
**Form:** Antigen affinity purified antibody

### Target description

This protein belongs to the ser/thr family of protein kinases, Cdc2/cdkx subfamily; gsk-3 subsubfamily. It is implicated in the hormonal control of several regulatory proteins including glycogen synthase, myb, and the transcription factor c-jun.

### Antigen

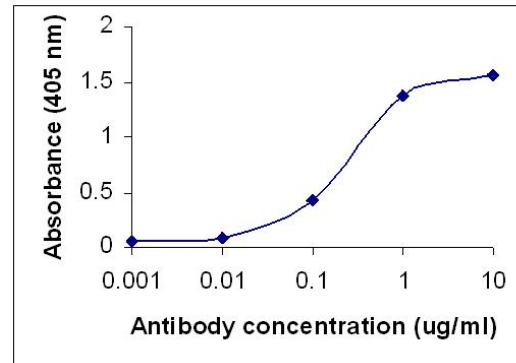
This polyclonal antibody was raised by immunizing chicken with GSK-3 $\alpha$  peptide (aa 89 - 100)

### Application

Western blotting, tissue or cell immunostaining. Recommended starting dilution for Western blot analysis is 1:500, for tissue or cell staining is 1:200. Optimal working dilutions must be determined by the end user.

### Related Products

1. Anti-Glycogen synthase kinase 3 beta (GSK-3B), Chicken pAb (PY-10180).



### Direct ELISA Test:

Free peptide as test antigen (5µg/ml). Affi-pure IgY as primary antibody and Goat anti-IgY HRP as 2<sup>nd</sup> antibody.

### Storage

It is supplied as antigen affinity purified antibody in lyophilized powder. Redissolve the powder with 100 microliter sterile water will restore to the original concentration 1mg/ml (1xPBS). Store at 4°C for short-term application. For long-term storage, aliquot and store at -20°C.

### References

Nikoulina, S.E., Ciaraldi, T.P., Mudaliar, S., Carter, L., Johnson, K. and Henry, R.R. Inhibition of glycogen synthase kinase 3 improves insulin action and glucose metabolism in human skeletal muscle Diabetes 51 (7), 2190-2198 (2002).