



Anti-Signal transducer and activator of transcription 6 (STAT6), Chicken-Polyclonal Antibody

Catalog No. PY-10185
Antigen species: Human
Host species: Chicken

Quantity: 100 μ g
Reactivity: Human
Form: Antigen affinity-purified antibody

Applications: Western blot

Target description

This protein plays a central role in exerting IL4 mediated biological responses. It is found to induce the expression of BCL2L1/BCL-X(L), which is responsible for the anti-apoptotic activity of IL4. Knockout studies in mice suggested the roles of this gene in differentiation of T helper 2 (Th2) cells, expression of cell surface markers.

Antigen

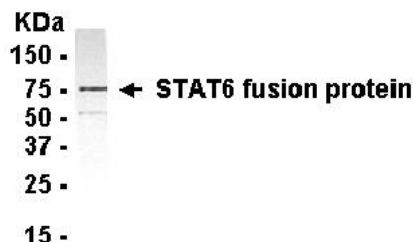
This polyclonal antibody was raised by immunizing chicken with STAT6 fusion protein (61-275 amino acids).

Application

Western blotting, tissue or cell immunostaining. Recommended starting dilution for Western blot analysis is 1:500, for tissue or cell staining is 1:200. Optimal working dilutions must be determined by the end user.

Related Products

1. Anti-STAT1 beta, Chicken pAb (PY-10184)



E. coli-derived fusion protein as test antigen.

Western Blot Test:

1. Block membrane with 5% non-fat milk in PBS-T for 1 hour at room temperature or longer at 4°C.
2. Incubate membrane with IgY antibodies at dilution of 1: 2,000 with 1% milk in PBS-T at R.T. for 1 h.
3. Rinse 3 times with PBS-T, then wash membrane with PBS-T, 5 min each, total of 3 times.
4. Incubate with 2nd antibody (goat-anti-IgY/Fc-HRP) at dilution 1: 1,000 for ECL (with 1% milk PBS-T) at R.T. for 1 h.
5. Rinse 3 times with PBS-T, then wash with PBS-T, 5 min each with shaking, total of 3 times.
6. Perform ECL detection of signal using Pierce ECL kit.

Storage

It is supplied as antigen affinity purified antibody in lyophilized powder. Redissolve the powder with 100 microliter sterile water will restore to the original concentration 1mg/ml (1 \times PBS). Store at 4°C for short-term application. For long-term storage, aliquot and store at -20°C.

References

1. Bour-Jordan, H., Grogan, J.L., Tang, Q., Auger, J.A., Locksley, R.M., Bluestone, J.A. CTLA-4 regulates the requirement for cytokine-induced signals in T(H)2 lineage commitment. *Nature Immun.* 4: 182-188, 2003.

FOR RESEARCH USE ONLY AND NOT INTENDED FOR DIAGNOSTIC OR THERAPEUTIC USE