



Anti-Glycogen synthase kinase 3 beta (GSK-3 β), Chicken-Polyclonal Antibody

Catalog No. PY-10180

Antigen species: Human

Host species: Chicken

Quantity: 100 μ g **Applications tested:** ELISA

Reactivity: Human, Mouse, Rat

Form: Antigen affinity purified antibody

Target description

Glycogen synthase kinase-3 (GSK3) is a proline-directed serine-threonine kinase that was initially identified as a phosphorylating and inactivating glycogen synthase. Two isoforms, alpha (GSK3A; MIM 606784) and beta, show a high degree of amino acid homology. GSK3B is involved in energy metabolism, neuronal cell development, and body pattern formation

Antigen

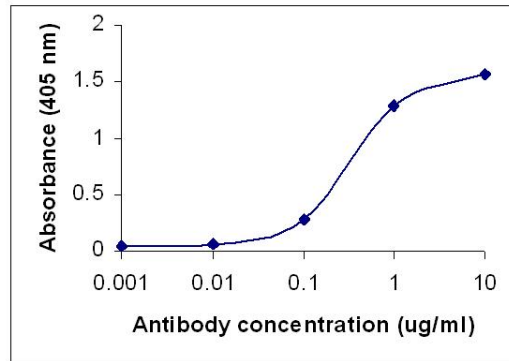
This polyclonal antibody was raised by immunizing chicken with GSK-3b peptide (aa 21-36)

Application

Western blotting, tissue or cell immunostaining. Recommended starting dilution for Western blot analysis is 1:500, for tissue or cell staining is 1:200. Optimal working dilutions must be determined by the end user.

Related Products

1. Anti-Glycogen synthase kinase 3 alpha (GSK-3A),Chicken pAb (PY-10187).



Direct ELISA Test:

Free peptide as test antigen (5 μ g/ml). Affi-pure IgY as primary antibody and Goat anti-IgY HRP as 2nd antibody.

Storage

It is supplied as antigen affinity purified antibody in lyophilized powder. Redissolve the powder with 100 microliter sterile water will restore to the original concentration 1mg/ml (1 \times PBS). Store at 4 $^{\circ}$ C for short-term application. For long-term storage, aliquot and store at -20 $^{\circ}$ C.

References

Etienne-Manneville, S.; Hall, A. : Cdc42 regulates GSK-3-beta and adenomatous polyposis coli to control cell polarity. Nature 421: 753-756, 2003.