



Anti-MUC1 (a.a. 1181-1226), Chicken-Polyclonal Antibody

Catalog No. PY-10166

Antigen species: Human

Host species: Chicken

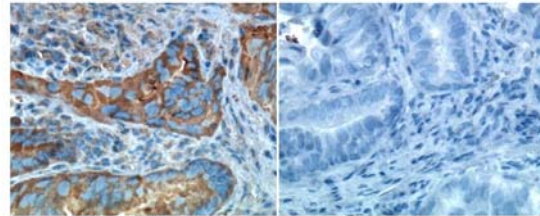
Quantity: 100µg **Applications tested:** Western Blot, IHC

Reactivity: Human, Mouse, Rat

Form: Antigen affinity purified antibody

Target description

CD227 (MUC1) is a large cell surface mucin glycoprotein expressed by most glandular and ductal epithelial cells and some hematopoietic cell lineages. The MUC1 gene contains seven exons and produces several different alternatively spliced variants. The major expressed form of CD227 uses all seven exons and is a type 1 transmembrane protein with a large extracellular tandem repeat domain. The tandem repeat domain is highly O-glycosylated and alterations in glycosylation have been shown in epithelial cancer cells.



Anti-MUC-1 IgY

Negative control

Antigen

This polyclonal antibody was raised by immunizing chicken with a human MUC1 fusion protein (1181~1226 amino acids).

Application

Western blotting, tissue or cell immunostaining. Recommended starting dilution for Western blot analysis is 1:500, for tissue or cell staining is 1:100. Optimal working dilutions must be determined by the end user.

Related Products

1. Anti-MUC1(197-252), Chicken-Poly, PY-10167



Western blot Protocol

1. Block membrane with 5% non-fat milk in PBS-T for 1 hour at room temperature or longer at 4°C.
2. Incubate membrane with IgY antibodies at dilution of 1: 2,000 with 1% milk in PBS-T at R.T. for 1 h.
3. Rinse 3 times with PBS-T, then wash membrane with PBS-T, 5 min each, total of 3 times.
4. Incubate with 2nd antibody (goat-anti-IgY/Fc-HRP) at dilution 1:1,000 for ECL (with 1% milk PBS-T) at R.T. for 1h.
5. Rinse 3 times with PBS-T, then wash with PBS-T, 5 min each with shaking, total of 3 times.
6. Perform ECL detection of signal using Pierce ECL kit.

Immunohistochemistry Staining:

Anti-MUC-1 IgY staining of Formalin-fixed and paraffin-embedded Esophageal Cancer tissue. Affinity-purified IgY dilution: 1:100, Rabbit anti-IgY-Biotin dilution: 1:300. (Courtesy of Jessica Wang-Rodriguez MD, UCSD & VA San Diego Healthcare System.)

Storage

It is supplied as antigen affinity purified antibody in lyophilized powder. Redissolve the powder with 100 microliter sterile water will restore to the original concentration 1mg/ml (1x PBS). Store at 4°C for short-term application. For long-term storage, aliquot and store at -20°C.

References

1. Ligtenberg, M.J., Vos, H.L., Gennissen, A.M. and Hilkens, J. Episialin, a carcinoma-associated mucin, is generated by a polymorphic gene encoding splice variants with alternative amino termini J. Biol. Chem. 265 (10), 5573-5578 (1990)

FOR RESEARCH USE ONLY AND NOT INTENDED FOR DIAGNOSTIC OR THERAPEUTIC USE