



Genesis Biotech Inc.

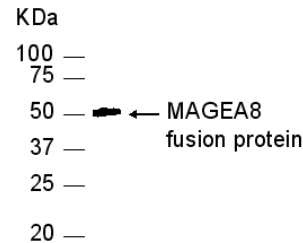
website: <http://www.genesisbio.com.tw> e-mail : [info@genesisbio.com.tw](mailto:info@genesisbio.com.tw)

## Anti-MEGA8, Chicken-Polyclonal Antibody

**Catalog No.** PY-10164      **Quantity:** 100 µg      **Host species:** Chicken  
**Reactivity:** Human      **Antigen species:** Human      **Applications tested:** Western Blot, IHC  
**Conjugate:** unconjugated      **Type:** polyclonal antibody      **Form:** Affinity-purified antibody

### Target description

The MAGEA genes are expressed at a high level in a number of tumors of various histologic types, and are silent in normal tissues with the exception of testis and placenta. The MAGEA genes are clustered on chromosome Xq28. They may be implicated in some hereditary disorders, such as dyskeratosis congenita.



### Antigen

This polyclonal antibody was raised by immunizing chicken with a human MEGA8 fusion protein.

### Application

Western blotting, tissue staining. Recommended starting dilution for Western blot analysis is 1:3000, for IHC staining is 1:200. Optimal working dilutions must be determined by the end user.

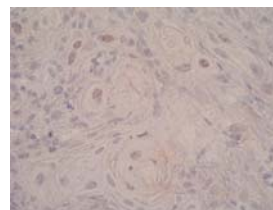
### Related Products

Anti-Troponin I(8-35), Chicken-Poly PY-10206  
Anti-Troponin I(93-122), Chicken-Poly PY-10270  
Anti-PCLP(239-310), Chicken-Poly PY-10274  
Anti-PCLP(335-387), Chicken-Poly PY-10275  
Anti-PCLP(408-462), Chicken-Poly PY-10276  
Anti-Adiponectin, Chicken-Poly, PY-10204  
Anti-Resistin, Chicken-Poly, PY-10205  
Anti-Digoxin, Chicken-Poly, PY-10207

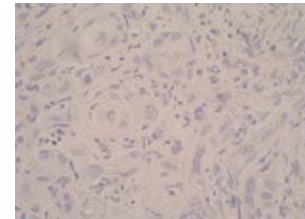
### Western blot Procedure

*E coli*-derived fusion protein as test antigen. Affi-pure IgY dilution: 1:5000, Goat anti-IgY-HRP dilution: 1:10000. ECL method for signal development.

### AEC Tissue Staining:



Oral cancer-MAGE8(1:150)



Oral cancer-MAGE8-negative

### Storage

It is supplied as affinity purified antibody/ PBS buffer in lyophilized powder. Redissolve the powder with 100 µL sterile water will restore to the original concentration 1mg/mL. Store at 4°C for short-term application. For long-term storage, aliquot and store at -20°C.

### References

- 1 De Plaen E, Arden K, Traversari C, Gaforio JJ, Szikora JP, De Smet C, Basseur F, van der Bruggen P, Lethe B, Lurquin C, et al. Immunogenetics. 1994;40(5):360-9.
- 2.Rogner UC, Wilke K, Steck E, Korn B, Poustka A. Genomics. 1995 Oct 10;29(3):725-31.

**FOR RESEARCH USE ONLY AND NOT INTENDED FOR DIAGNOSTIC OR THERAPEUTIC USE**