



Anti-Enolase 1(NSE), Chicken-Polyclonal Antibody

Catalog No. PY-10163 **Quantity:** 100µg **Applications tested:** Western Blot
Antigen species: Human **Reactivity:** Human, Mouse, Rat
Host species: Chicken **Form:** Antigen affinity purified antibody

Target description

Enolase 1 gene encodes one of three enolase isoenzymes found in mammals; it encodes alpha-enolase, a homodimeric soluble enzyme, and also encodes a shorter monomeric structural lens protein, tau-crystallin. The two proteins are made from the same message. The full length protein, the isoenzyme, is found in the cytoplasm. The shorter protein is produced from an alternative translation start, is localized to the nucleus, and has been found to bind to an element in the c-myc promoter.

Antigen

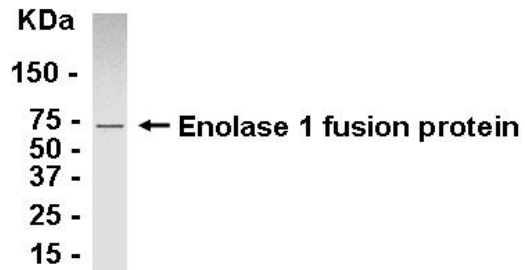
This polyclonal antibody was raised by immunizing chicken with NSE fusion protein (161-320 amino acids).

Application

Western blotting, tissue or cell immunostaining. Recommended starting dilution for Western blot analysis is 1:500, for tissue or cell staining is 1:200. Optimal working dilutions must be determined by the end user.

Related Products

1. Anti-Cytokeratin 8 (KRT8), Chicken pAb (PY-10149).
2. Anti-Cytokeratin 18 (KRT18), Chicken pAb (PY-10150).
3. Anti- Toll-like receptor 2 (TLR2), Chicken pAb (PY-10152)
4. Anti- Toll-like receptor 3 (TLR3), Chicken pAb (PY-10154)
5. Anti- Toll-like receptor 7 (TLR7), Chicken pAb (PY-10148)



E coli-derived fusion protein as test antigen.

Western blot Protocol

1. Block membrane with 5% non-fat milk in PBS-T for 1 hour at room temperature or longer at 4°C.
2. Incubate membrane with IgY antibodies at dilution of 1: 2,000 with 1% milk in PBS-T at R.T. for 1 h.
3. Rinse 3 times with PBS-T, then wash membrane with PBS-T, 5 min each, total of 3 times.
4. Incubate with 2nd antibody (goat-anti-IgY/Fc-HRP) at dilution 1: 1,000 for ECL (with 1% milk PBS-T) at R.T. for 1h.
5. Rinse 3 times with PBS-T, then wash with PBS-T, 5 min each with shaking, total of 3 times.
6. Perform ECL detection of signal using Pierce ECL kit.

Storage

It is supplied as antigen affinity purified antibody in lyophilized powder. Redissolve the powder with 100 microliter sterile water will restore to the original concentration 1mg/ml (1×PBS). Store at 4°C for short-term application. For long-term storage, aliquot and store at -20°C.

References

Ochi, H.; Horiuchi, I.; Araki, N.; Toda, T.; Araki, T.; Sato, K.; Murai, H.; Osoegawa, M.; Yamada, T.; Okamura, K.; Ogino, T.; Mizumoto, K.; Yamashita, H.; Saya, H.; Kira, J. : Proteomic analysis of human brain identifies alpha-enolase as a novel autoantigen in Hashimoto's encephalopathy. FEBS Lett. 528: 197-202, 2002.