



Genesis Biotech Inc.

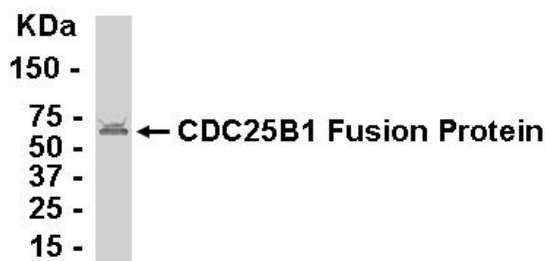
website: <http://www.genesisbio.com.tw> e-mail : info@genesisbio.com.tw

Anti-Cell division cycle 25B1, Chicken-Polyclonal Antibody

Catalog No. PY-10100	Quantity: 100 µg	Antigen species: Human
Reactivity: Human	Applications tested: Western Blot	
Host species: chicken	Type: polyclonal antibody	Form: total IgY antibody

Target description

CDC 25B; cell division cycle 25B, isoform 1.
CDC 25B is a member of the CDC25 family of phosphatases. CDC 25B activates the cyclin dependent kinase CDC2 by removing two phosphate groups and it is required for entry into mitosis. CDC 25B shuttles between the nucleus and the cytoplasm due to nuclear localization and nuclear export signals. CDC 25B has oncogenic properties, although its role in tumor formation has not been determined.



Antigen

This polyclonal antibody was raised by immunizing chicken with the immunogen of cell division cycle 25B, isoform 1 (140-185 amino acids) fusion protein. The Protein Accession Number of the CDC 25B is NP_004349.1.

Western blot Procedure

E. coli-derived fusion protein as test antigen. IgY dilution: 1:2000, Goat anti-IgY-HRP dilution: 1:1000. Colorimetric method for signal development.

Application

The antibody specificity was assayed by Western blotting with the antigen CDC 25B1 fusion protein. Recommended starting dilution for Western blot analysis is 1:500, for tissue or cell staining is 1:200. Optimal working dilutions must be determined by the end user.

Storage

It is supplied as affinity purified antibody/ PBS buffer in lyophilized powder. Redissolve the powder with 350µL sterile water will restore to the original concentration. Store at 4°C for short-term application. For long-term storage, aliquot and store at -20°C.

Related Products

Anti-Cell division cycle 25C, Chicken-Poly (PY-10101)
Anti-protein tyrosine phosphatase (PRL-3) Rabbit-polyclonal Ab (GB-10343)
Anti-PRL-3 Rabbit-monoclonal Ab (GB-63023)
Anti-CD30 (Ki-1 Antigen), Chicken-Poly (PY-10096)
Anti-Protein tyrosine phosphatase, non-receptor type 3, Chicken-Poly (PY-10097)
Anti-Protein tyrosine phosphatase, non-receptor type sigma, Chicken-Poly (PY-10098)
Anti-Protein tyrosine phosphatase, non-receptor type 12, Chicken-Poly (PY-10099)

References

1. Lincoln, A. J.; Wickramasinghe, D.; Stein, P.; Schultz, R. M.; Palko, M. E.; De Miguel, M. P.; Tessarollo, L.; Donovan, P. J.: Cdc25b phosphatase is required for resumption of meiosis during oocyte maturation. *Nature Genet.* 30: 446-449, 2002.

FOR RESEARCH USE ONLY AND NOT INTENDED FOR DIAGNOSTIC OR THERAPEUTIC USE