



## Anti-IkB kinase beta subunit (IKK2), Chicken-Polyclonal Antibody

**Catalog No.** PY-10098  
**Antigen species:** Human  
**Host species:** Chicken

**Quantity:** 100µg  
**Reactivity:** Human  
**Form:** Antigen affinity-purified antibody

**Applications:** Western blot

### Target description

NF-κB is associated with IκB proteins in the cell cytoplasm, which inhibit NF-κB activity. The IκB kinase (IKK) phosphorylates IκB, and mediates IκB degradation and NF-κB activation. IKK is a serine protein kinase. Beta subunit is part of the IKK complex.

### Antigen

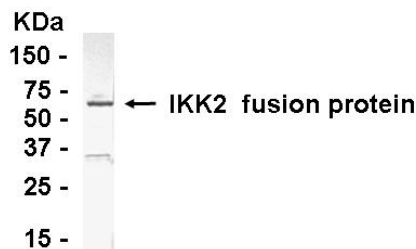
This polyclonal antibody was raised by immunizing chicken with human IKK2 fusion protein (310-376 amino acids).

### Application

Western blotting, tissue or cell immunostaining. Recommended starting dilution for Western blot analysis is 1: 500, for tissue or cell staining is 1: 200. Optimal working dilutions must be determined by the end user.

### Related Products

1. Anti-STAT1 beta, Chicken pAb (PY-10184)
2. Anti-STAT6, Chicken pAb (PY-10185)
3. Anti-Jun kinase (JNK2), Chicken pAb (PY-10198)
4. Anti-serine/ threonine protein kinase (AKT), Chicken pAb (PY-10176)
5. Anti-serine/threonine protein kinase1 (AKT1), Chicken pAb (PY-10178)



*E. coli*-derived fusion protein as test antigen.

### Western blot Protocol

1. Block membrane with 5% non-fat milk in PBS-T for 1 hour at room temperature or longer at 4°C.
2. Incubate membrane with IgY antibodies at dilution of 1: 2,000 with 1% milk in PBS-T at R.T. for 1 h.
3. Rinse 3 times with PBS-T, then wash membrane with PBS-T, 5 min each, total of 3 times.
4. Incubate with 2nd antibody (goat-anti-IgY/Fc-HRP) at dilution 1: 1,000 for ECL (with 1% milk PBS-T) at R.T. for 1 h.
5. Rinse 3 times with PBS-T, then wash with PBS-T, 5 min each with shaking, total of 3 times.
6. Perform ECL detection of signal using Pierce ECL kit.

### Storage

It is supplied as antigen affinity purified antibody in lyophilized powder. Redissolve the powder with 100 microliter sterile water will restore to the original concentration 1mg/ml (1×PBS). Store at 4°C for short-term application. For long-term storage, aliquot and store at -20°C.

### References:

1. DiDonato, J.A., Hayakawa, M., Rothwarf, D.M., Zandi, E., Karin, M.: A cytokine-responsive IκappaB kinase that activates the transcription factor NF-kappaB. *Nature* 388: 548-554, 1997.

**FOR RESEARCH USE ONLY AND NOT INTENDED FOR DIAGNOSTIC OR THERAPEUTIC USE**