



Anti-Cyclin-dependent kinase inhibitor 1A (p21), Chicken-Polyclonal Antibody

Catalog No. PY-10097
Antigen species: Human
Host species: Chicken

Quantity: 100 μ g
Reactivity: Human
Form: Antigen affinity-purified antibody

Applications: Western blot

Target description

This protein is a potent cyclin-dependent kinase inhibitor. It binds to and inhibits the activity of cyclin-CDK2 or -CDK4 complexes, and thus functions as a regulator of cell cycle progression at G1. The expression of p21 gene is tightly controlled by the tumor suppressor protein p53, through which this protein mediates the p53-dependent cell cycle G1 phase arrest in response to a variety of stress stimuli. This protein can interact with proliferating cell nuclear antigen (PCNA), a DNA polymerase accessory factor, and plays a regulatory role in S phase DNA replication and DNA damage repair. This protein was reported to be specifically cleaved by CASP3-like caspases, which thus leads to a dramatic activation of CDK2, and may be instrumental in the execution of apoptosis following caspase activation.

Antigen

This polyclonal antibody was raised by immunizing chicken with human p21 fusion protein (20-149 amino acids).

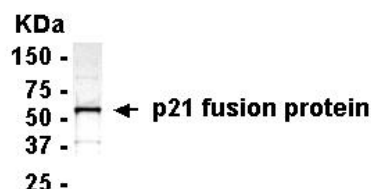
Application

Western blotting, tissue or cell immunostaining.

Recommended starting dilution for Western blot analysis is 1: 500, for tissue or cell staining is 1: 200.

Related Products

1. Anti-STAT1 beta, Chicken pAb (PY-10184)
2. Anti-STAT6, Chicken pAb (PY-10185)
3. Anti-Jun kinase (JNK2), Chicken pAb (PY-10198)
4. Anti-serine/ threonine protein kinase (AKT), Chicken pAb (PY-10176)
5. Anti-serine/threonine protein kinase1 (AKT1), Chicken pAb (PY-10178)



Western blot Protocol

1. Block membrane with 5% non-fat milk in PBS-T for 1 hour at room temperature or longer at 4°C.
2. Incubate membrane with IgY antibodies at dilution of 1: 2,000 with 1% milk in PBS-T at R.T. for 1 h.
3. Rinse 3 times with PBS-T, then wash membrane with PBS-T, 5 min each, total of 3 times.
4. Incubate with 2nd antibody (goat-anti-IgY/Fc-HRP) at dilution 1: 1,000 for ECL (with 1% milk PBS-T) at R.T. for 1 h.
5. Rinse 3 times with PBS-T, then wash with PBS-T, 5 min each with shaking, total of 3 times.
6. Perform ECL detection of signal using Pierce ECL kit.

Storage

It is supplied as antigen affinity purified antibody in lyophilized powder. Redissolve the powder with 100 microliter sterile water will restore to the original concentration 1mg/ml (1 \times PBS). Store at 4°C for short-term application. For long-term storage, aliquot and store at -20°C.

FOR RESEARCH USE ONLY AND NOT INTENDED FOR DIAGNOSTIC OR THERAPEUTIC USE