



Anti-Breast cancer 1(BRCA1), Chicken-Polyclonal Antibody

Catalog No. PY-10034

Antigen species: Human

Host species: chicken

Quantity: 100 μ g

Reactivity: Human

Form: antigen affinity purified antibody

Applications tested: Western blot, IHC

Target description

Breast cancer 1 (BRCA1) is a tumor suppressor gene located on the long arm of chromosome 17. BRCA1 mutations are linked to breast cancer as well as ovarian cancer

Antigen

This polyclonal antibody was raised by immunizing chicken with human Breast cancer 1 fusion protein (1395-1454 amino acids).

Application

The antibody specificity was assayed by Western blotting with *E. coli* derived human Breast cancer 1 fusion protein. The antibody titer is more than 2000 for Western blotting. It has not been tested in the other applications. However, for the first testing, we recommend 1/5000 dilution for ELISA, 1/2000 dilution for WB of recombinant protein, 1/800 dilution for tissue extracts or cell lysates, 1/20 dilution for immunohisto-chemistry (IHC) staining on frozen cryosections, 1/20 dilution for IHC staining on paraffin embedded sections.

Related Products

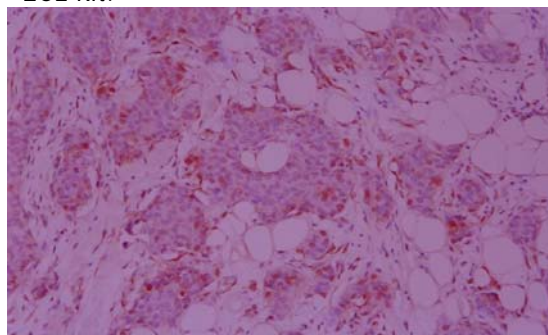
1. Anti-TEM1 pAb (GB-10374).
2. Anti-TEM2 pAb (GB-30131).
3. Anti-TEM3 pAb (GB-30132).
4. Anti-TEM4 pAb (GB-30133).
5. Anti-TEM5 pAb (GB-10011).



Western Blot Protocol:

1. Block membrane with 5% non-fat milk in PBS-T for 1 hour at room temperature or longer at 4°C.

2. Incubate membrane with IgY antibodies at dilution of 1: 2,000 with 1% milk in PBS-T at R.T. for 1 h.
3. Rinse 3 times with PBS-T, then wash membrane with PBS-T, 5 min each, total of 3 times.
4. Incubate with 2nd antibody (goat-anti-IgY/Fc-HRP) at dilution 1:1,000 for ECL (with 1% milk PBS-T) at R.T. for 1h.
5. Rinse 3 times with PBS-T, then wash with PBS-T, 5 min each with shaking, total of 3 times.
6. Perform ECL detection of signal using Pierce ECL kit.



Immunohistochemistry staining (IHC) test:

Immunohistochemistry staining (IHC) of Breast, Infiltrating ductal carcinoma with the PY-10034: anti-Breast cancer 1, chicken IgY (BRCA1 protein affinity purified antibody) (1:20).

Storage

It is supplied as antigen affinity purified antibody in lyophilized powder. Redissolve the powder with 100 microliter sterile water will restore to the original concentration 1mg/ml (1xPBS). Store at 4°C for short-term application. For long-term storage, aliquot and store at -20°C.

References

Bochar, D. A.; Wang, L.; Beniya, H.; Kinev, A.; Xue, Y.; Lane, W. S.; Wang, W.; Kashanchi, F.; Shiekhhattar, R. : BRCA1 is associated with a human SWI/SNF-related complex: linking chromatin remodeling to breast cancer. Cell 102: 257-265, 2000.