



## Anti-Vascular endothelial growth factor (VEGF), Chicken-Polyclonal Antibody

**Catalog No.** PY-10031

**Quantity:** 100µg

**Applications:** Western Blot

**Antigen species:** Human, Dog, Cat

**Reactivity:** Human

**Host species:** Chicken

**Form:** Antigen affinity purified antibody

### Target description

Vascular endothelial growth factor (VEGF) is one of the most important growth and survival factors for endothelium. It induces angiogenesis and endothelial cell proliferation and plays an important role in regulating vasculogenesis.

### Antigen

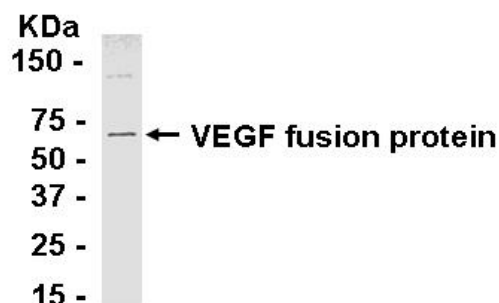
This polyclonal antibody was raised by immunizing chicken with VEGF fusion protein (40-104 amino acids).

### Application

Western blotting, tissue or cell immunostaining. Recommended starting dilution for Western blot analysis is 1:500, for tissue or cell staining is 1:200. Optimal working dilutions must be determined by the end user.

### Related Products

1. Anti-VEGFR3, pAb (GB-30015)
2. Anti-Vascular endothelial growth factor (VEGF), pAb (GB-10050)
3. Anti-v-erb-b2 erythroblastic leukemia viral oncogene homolog 2 (Her2/neu a.a. 153-433), pAb (PY-10254)
4. Anti-v-erb-b2 erythroblastic leukemia viral oncogene homolog 2 (Her2/neu a.a.146-195), pAb (PY-10256)
5. Anti-insulin-like growth factor binding protein 6 (IGFBP6), pAb (PY-10255)



*E coli*-derived fusion protein as test antigens.

### Western Blot protocol:

1. Block membrane with 5% non-fat milk in PBS-T for 1 hour at room temperature or longer at 4°C.
2. Incubate membrane with IgY antibodies at dilution of 1: 2,000 with 1% milk in PBS-T at R.T. for 1 h.
3. Rinse 3 times with PBS-T, then wash membrane with PBS-T, 5 min each, total of 3 times.
4. Incubate with 2nd antibody (goat-anti-IgY/Fc-HRP) at dilution 1: 1,000 for ECL (with 1% milk PBS-T) at R.T. for 1 h.
5. Rinse 3 times with PBS-T, then wash with PBS-T, 5 min each with shaking, total of 3 times.
6. Perform ECL detection of signal using Pierce ECL kit.

### Storage

It is supplied as antigen affinity purified antibody in lyophilized powder. Redissolve the powder with 100 microliter sterile water will restore to the original concentration 1mg/ml (1×PBS). Store at 4°C for short-term application. For long-term storage, aliquot and store at -20°C.

### References

1. Bachelder, R.E., Wendt, M.A. and Mercurio, A.M. Vascular endothelial growth factor promotes breast carcinoma invasion in an autocrine manner by regulating the chemokine receptor CXCR4. *Cancer Res.* 62 (24), 7203-7206 (2002).

FOR RESEARCH USE ONLY AND NOT INTENDED FOR DIAGNOSTIC OR THERAPEUTIC USE