



Anti-Human calpastatin -Polyclonal Antibody

Catalog No. PY-10012 **Quantity:** 100 μ g **Applications tested:** ELISA, Western Blot

Antigen species: Human **Reactivity:** Human

Host species: Chicken **Form:** Antigen affinity purified antibody

Target description

Calpastatin is an endogenous proteinase inhibitor that acts specifically on calpain (a calcium-dependent cysteine protease).

Antigen

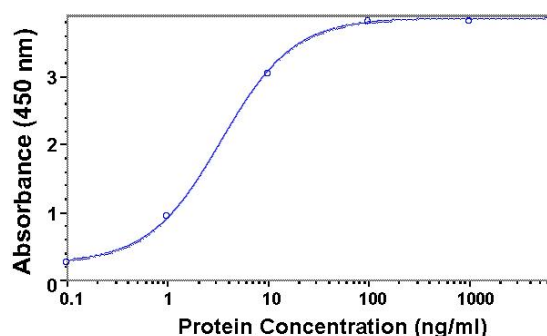
This polyclonal antibody was raised by immunizing chicken with fusion protein of calpastatin domain I, comprising of 137 amino acid.

Application

The antibody specificity was assayed by Western blotting with Calpastatin protein. Western blotting, tissue or cell immunostaining, ELISA. Recommended starting dilution for Western blot analysis is 1:500, for tissue or cell staining is 1:200, for ELISA is 1 μ g/ml.

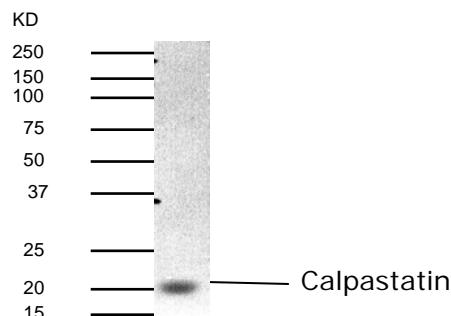
Related Products

1. Anti-TEM1 pAb (GB-10374).
2. Anti-TEM2 pAb (GB-30131).
3. Anti-TEM3 pAb (GB-30132).
4. Anti-TEM4 pAb (GB-30133).
5. Anti-TEM5 pAb (GB-10011).



Direct ELISA Test:

Recombinant protein as test antigen. Affi-pure IgY as primary antibody and Goat anti-IgY-HRP as 2nd antibody. Fixed amount of Antibody (1 μ g/ml) and serial dilutions of antigen.



Western blot Protocol

1. Block membrane with 5% non-fat milk in PBS-T for 1 hour at room temperature or longer at 4°C.
2. Incubate membrane with IgY antibodies at dilution of 1: 2,000 with 1% milk in PBS-T at R.T. for 1 h.
3. Rinse 3 times with PBS-T, then wash membrane with PBS-T, 5 min each, total of 3 times.
4. Incubate with 2nd antibody (goat-anti-IgY/Fc-HRP) at dilution 1:1,000 for ECL (with 1% milk PBS-T) at R.T. for 1h.
5. Rinse 3 times with PBS-T, then wash with PBS-T, 5 min each with shaking, total of 3 times.
6. Perform ECL detection of signal using Pierce ECL kit.

Storage

It is supplied as antigen affinity purified antibody in lyophilized powder. Redissolve the powder with 100 microliter sterile water will restore to the original concentration 1mg/ml (1 \times PBS). Store at 4°C for short-term application. For long-term storage, aliquot and store at -20°C.

References

LiS, Liang ZG, Wang GY, Yavetz B, Kim ED, Gold-berg E. Molecular cloning and characterization of functional domains of a human testis-specific iso-form of calpastatin. *Biol Reprod* 2000 Jul;63 (1) :172-8