



Anti-Interleukin 10, Chicken-Polyclonal Antibody

Catalog No. PY-10005

Antigen species: Human

Host species: Chicken

Quantity: 100 μ g

Reactivity: Human

Form: Antigen affinity purified antibody

Applications tested: ELISA

Target description

Human Interleukin-10 (IL-10) is an important regulatory cytokine whose involvement extends into diverse areas of the human immune system. M.W: 18,600

Antigen

This polyclonal antibody was raised by immunizing chicken with IL-10 recombinant protein (19-179 amino acids).

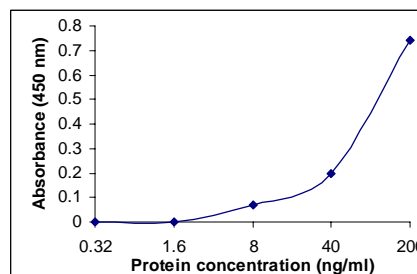
Application

ELISA, Western blotting, tissue or cell immunostaining.

Recommended starting dilution for Western blot analysis is 1: 500, for tissue or cell staining is 1: 200, for ELISA is 0.1-0.5 μ g/ml. Optimal working dilutions must be determined by the end user.

Related Products

1. Anti-Interleukin-1 beta, pAb (PY-10003)
2. Anti-Interleukin-8, pAb (PY-10004)
3. Anti-Interleukin-16, pAb (PY-10006)
4. Anti-Interleukin-17, pAb (PY-10007)
5. Anti- Interleukin-20 short form, mAb (GB-52020)



Recombinant protein as test antigen.

Sandwich ELISA Test.

Rabbit polyclonal anti-IL-10 IgG as capture antibody, Affinity-Purified anti-IL-10 IgY-Biotin as detection antibody.

Storage

It is supplied as antigen affinity purified antibody in lyophilized powder. Redissolve the powder with 100 microliter sterile water will restore to the original concentration 1mg/ml (1 \times PBS). Store at 4 $^{\circ}$ C for short-term application. For long-term storage, aliquot and store at -20 $^{\circ}$ C.

References:

1. Eskdale J, Kube D, Tesch H and Gallagher G. Mapping of the human IL10 gene and further characterization of the 5' flanking sequence. *Immunogenetics* 46 (2), 120-128 (1997).

FOR RESEARCH USE ONLY AND NOT INTENDED FOR DIAGNOSTIC OR THERAPEUTIC USE