



Anti-Interleukin 8, Chicken-Polyclonal Antibody

Catalog No. PY-10004

Antigen species: Human

Host species: Chicken

Quantity: 100 μ g

Reactivity: Human

Form: Antigen affinity purified antibody

Applications tested: ELISA

Target description

IL-8 is a chemotactic factor that attracts neutrophils, basophils, and T-cells, but not monocytes. It is also involved in neutrophil activation. It is released from several cell types in response to an inflammatory stimulus.

Antigen

This polyclonal antibody was raised by immunizing chicken with IL-8 recombinant protein (28-99 amino acids).

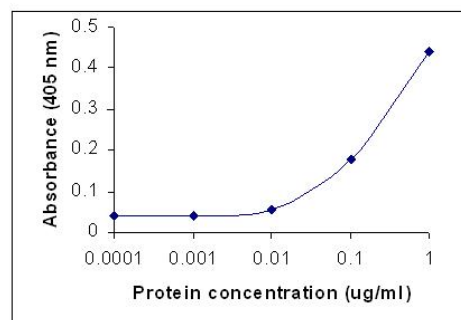
Application

ELISA, Western blotting, tissue or cell immuno-staining.

The recommend concentration for ELISA is 0.5-1 μ g/ml. Optimal working dilutions must be determined by the end user.

Related Products

1. Anti-Interleukin-1 beta, pAb (PY-10003)
2. Anti-Interleukin-10, pAb (PY-10005)
3. Anti-Interleukin-16, pAb (PY-10006)
4. Anti-Interleukin-17, pAb (PY-10007)
5. Anti- Interleukin-20 short form, mAb (GB-52020)



Recombinant protein as test antigen.

Direct ELISA:

Affinity-Purified anti-IL-8 IgY as primary antibody (0.2 μ g/ml), and Goat anti-IgY-HRP as 2nd antibody.

Storage

It is supplied as antigen affinity purified antibody in lyophilized powder. Redissolve the powder with 100 microliter sterile water will restore to the original concentration 1mg/ml (1 \times PBS). Store at 4 $^{\circ}$ C for short-term application. For long-term storage, aliquot and store at -20 $^{\circ}$ C.

References:

1. Baldwin, E. T.*et al.* Crystallization of human interleukin-8. A protein chemotactic for neutrophils and T-lymphocytes. *J. Biol. Chem.* 265 (12), 6851-6853 (1990)

FOR RESEARCH USE ONLY AND NOT INTENDED FOR DIAGNOSTIC OR THERAPEUTIC USE