

Custom Antibodies

Genesis Biotech Inc. is a leading company in custom antibody service in Taiwan. Our FAST 6 weeks Rabbit Polyclonal Antibody Protocol makes the customized antibody can be finished earlier and with higher quality. Moreover, we had produced hundreds of catalogue antibody products sold worldwide not only based on the fast polyclonal antibody protocol, but also based on our proprietary rabbit hybridoma and mouse hybridoma platform technologies. Our service price is very competitive. In addition, we provide a win-win strategic antibody program with lower cost if your budget is limited.



PRODUCTS	CAT. NO.	PACKAGE	APPLICATION	NOTE
Mouse hybridoma-monoclonal antibody service	GB-9004	report+ 1~3 clones		Customer provide 5 mg of immunogen for immunization and hybridoma screening
Rabbit hybridoma-monoclonal antibody service	GB-9005	report+ 1~3 clones		Customer provide 5 mg of immunogen for immunization and hybridoma screening
Rabbit anti-protein polyclonal antibody service	GB-9006	80 ml antiserum 2 rabbits		Customer provide 5 mg of immunogen for immunization Customer provide 15mer
Rabbit anti-peptide polyclonal antibody service	GB-9007	80 ml antiserum 2 rabbits		peptide sequence for peptide synthesis, conjugation, and immunization
Rat anti-protein polyclonal antibody service	GB-9008	9 ml antiserum 3 rats		Customer provide 1 mg of immunogen for immunization Customer provide 15mer
Rat anti-peptide polyclonal antibody service	GB-9009	9 ml antiserum 3 rats		peptide sequence for peptide synthesis, conjugation, and immunization

Custom Peptide

Genesis Biotech Inc. established since 2001, provides high quality synthetic peptides to customers of Bioscience community worldwide. Not only the regular peptide synthesis, we are also many kinds of modified peptides, such as FITC, Edans, Dabcyl labeled, etc.. All synthetic peptides shipped to our customers are qualified with HPLC and Mass Spectrum analysis data, except the multie antigenic peptide (MAP), which is analyzed with HPLC only.



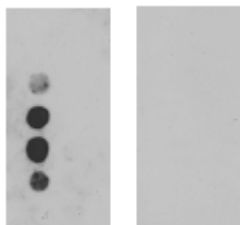
PRODUCTS	CAT. No.	PACKAGE	APPLICATION	NOTE
Peptide synthesis	GB-8001s	10mg	8 ~ 30 a.a.	20 ~ 30mg
Peptide synthesis	GB-8001	20mg	8 ~ 30 a.a.	
Peptide synthesis	GB-8002	lyophilized powder	31 ~ 55 a.a.	30 ~ 50mg
Peptide purification, additional fee	GB-8003	lyophilized powder	>70%	15 ~ 20mg
Peptide purification, additional fee	GB-8004	lyophilized powder	>80%	5 ~ 15mg
Peptide purification, additional fee	GB-8005	lyophilized powder	>95%	1 ~ 5mg
Peptide conjugation to KLH	GB-8006	lyophilized powder		5 mg
Peptide conjugation to BSA	GB-8007	lyophilized powder		5 mg
Multiple antigenic peptide (MAP, 8 branch), additional fee	GB-8008	20 ~ 30mg		each monomer 8 ~ 16 aa
Multiple antigenic peptide (MAP, 4 branch), additional fee	GB-8009	20 ~ 30mg		each monomer 16 ~ 25 a.a.
Edans modification	GB-8010			
Dabcyl modification	GB-8011			
Acetylation	GB-8012			
Amidation (C-Terminal)	GB-8013			
Anilide (C-Terminal)	GB-8014			
Biotin modification	GB-8015			
Benzoyloxycarbonylation	GB-8016			
Dansylation	GB-8017			
Dinitrobenzoylation (DNP)	GB-8018			
Fatty acid	GB-8019			
Formylation	GB-8020			
Nitronation	GB-8021			
Aminomethylcoumarin (AMC)	GB-8022		342/441 nm	excitation/emission wavelength
Fluorescein (FITC)	GB-8023		494/518 nm	
NBD	GB-8025		425/520 nm	
Tetramethylrhodamine (TAMRA)	GB-8026		555/580 nm	
Phosphorylation-Serine	GB-8027			
Phosphorylation-Threonine	GB-8028			
Phosphorylation-Tyrosine	GB-8029			

Peptide Array

The *in situ* peptide array can be applied to epitope mapping, phosphorylation sites mapping, enzyme/substrate interaction, and ligand/receptor interaction studies. The protocol for using the membrane based peptide array is similar to immuno-dot blot analysis, and the signals can be detected by traditional enzymes conjugated (ECL chemiluminescent kit) or radioactive reagents. Compared with the price and quality, you will find our price is very competitive from 24-dot to 96-dot peptide array products. Each dot contains about 50~100 µg peptide oriented from N-terminal to C-terminal (membrane side).



PRODUCTS	CAT. NO.	PACKAGE	APPCICATION	NOTE
Peptide array-24 dots	GB-7224	kit	for antibody bound epitope mapping , phosphorylation mapping	10 a.a./dot, protocol
Peptide array-48 dots	GB-7248	kit	for antibody bound epitope mapping , phosphorylation mapping	10 a.a./dot, protocol
Peptide array-72 dots	GB-7272	kit	for antibody bound epitope mapping , phosphorylation mapping	10 a.a./dot, protocol
Peptide array-96 dots	GB-7296	kit	for antibody bound epitope mapping , phosphorylation mapping	10 a.a./dot, protocol



Epitope mapping by comparative peptide array strategy:

- * SARS-CoV nucleocapsid protein peptide array was incubated with SARS probable patient's serum
- * SARS-CoV nucleocapsid protein peptide array was incubated with normal patient's serum

The specific epitope was identified within the sequential positive signal which peptide sequence were overlapping in adjacent peptide dots.

Catalogue antibody

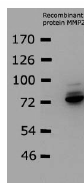
Our catalogue antibody is unique. We have the expertise in the rabbit hybridoma, mouse technology hybridoma for antibody production, and immunogenic peptide platform technology for peptide based antibody and vaccine development. Our antibody catalogue products are categorized in related groups as follows. Besides provide, we also have a win-win strategic antibody production which offer you the unlisted products for your intended applications. If you can not find your intended antibody products, please contact us for further information. Our newly launched antibodies are updated monthly on our on-line catalogue products.



✧ There are featured description for items denoted in red color font.

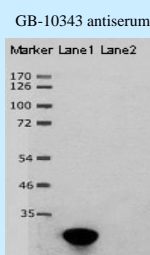
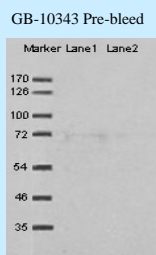
✧ Tumor and metastasis related antibodies

PRODUCTS	CAT. No.	HOST	PACKAGE	APPLICATION	NOTE
Anti-Bone morphogenetic protein 1 (BMP-1), Poly	GB-10001	Rabbit	250µl	ELISA	Serum
Anti-Tumor endothelial marker 8 (TEM8), Poly	GB-10009	Rabbit	100µg	WB (recombinant TEM8)	purified Ab, EC domain
Anti-Tumor endothelial marker 8 (TEM8), Poly	GB-10010	Rabbit	100µg	WB (tissue lysate), IHC	purified Ab, EC domain
Anti-Tumor endothelial marker 5 (TEM5), Poly	GB-10011	Rabbit	250µl	ELISA	antiserum, Intracellular domain (IC)
Anti-Matrix metalloproteinase 17 (MMP-17), Poly	GB-10042	Rabbit	250µl	ELISA	Serum
Anti-Matrix metalloproteinase 2 (MMP-2), Poly	GB-10342	Rabbit	250µl	ELISA, WB	protein immunogen, serum



Anti- Matrix metalloproteinase 2, Rabbit Polyclonal Antibody
IPTG induction of the recombinant protein expression for 2 hours.
Human MMP2 (78.3 kDa) 500X dilution of the first antibody:
rabbit anti-MMP2 polyclonal antibody (serum).
X-ray film exposed 5 seconds with the ECL kit.

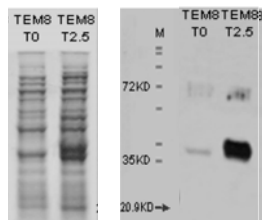
Anti-Protein tyrosine phosphatase-3 (PRL-3), Poly	GB-10343	Rabbit	250µl	WB, ELISA	protein immunogen, serum
--	-----------------	---------------	--------------	------------------	---------------------------------



Western Blot analysis of COS-1 cell transfected with pCI-hPRL-3 and the anti-PRL-3 Rabbit polyclonal antiserum (GB-10343). Lane1: COS-1 cells lysate transfected with pCI-hPRL-3 plasmid, Lane2: COS-1 cell lysate mock treatment, transfection reagent alone (without plasmid DNA). The primary antibody are GB-10343 antiserum and its pre-immune serum, respectively, which are diluted 1,000x in 3% BSA/TBST and the secondary antibody is goat anti-rabbit conjugated HRP.

Anti-Tumor endothelial marker 8 (TEM8), Poly	GB-10344	Rabbit	250µl	WB, ELISA	protein immunogen, serum
Anti-alpha actinin 4, Poly	GB-10371	Rabbit	100µg	ELISA	Purified Ab
Anti-Tumor endothelial marker 1 (TEM1 or endosialin), Poly	GB-10374	Rabbit	100µg	ELISA	Purified Ab
Anti- prothymosin α , Poly	GB-30019	Rabbit	250µl	ELISA	Unique, serum

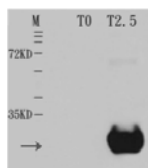
Anti-Tumor endothelial marker 8 (TEM8), Poly GB-30021 Rabbit 250µl WB, IHC, ELISA antiserum, EC domain



Anti-Tumor endothelial marker 8, Rabbit Polyclonal Antibody.
T₀:before IPTG induction of the protein expression
T_{2.5}:IPTG induction of the recombinant protein expression for 2.5 hours.
Mouse TEM8 was detected (36 kDa).
5000X dilution of the first antibody: GB-30021 X-ray film exposed 5 seconds with the ECL kit.

Anti-FLJ23603, Poly	GB-30024	Rabbit	250µl	ELISA	Unique, serum
Anti-dermokine (ZD52F10), Poly	GB-30025	Rabbit	100µg	WB, IHC, ELISA	Unique, purified Ab
Anti-Tumor endothelial marker 5 (TEM5), Poly	GB-30028	Rabbit	100ug	WB, IHC, ELISA	Unique, purified Ab
Anti-LOC54675, Poly	GB-30032	Rabbit	250µl	ELISA	Unique, serum
Anti-Tumor endothelial marker 5 (TEM5), Poly	GB-30088	Rabbit	100µg	ELISA	purified Ab, EC domain
Anti-Tumor endothelial marker 8 (TEM8), Poly	GB-30128-3C	Rabbit	100µg	ELISA	purified Ab, EC domain
Anti-Tumor endothelial marker 8 (TEM8), Poly	GB-30128-31C	Rabbit	100µg	ELISA	purified Ab, EC domain
Anti-Tumor endothelial marker 8 (TEM8), Poly	GB-30128-32C	Rabbit	100µg	ELISA	purified Ab, EC domain
Anti-Tumor endothelial marker 8 (TEM8), Poly	GB-30128-33C	Rabbit	100µg	ELISA	purified Ab, EC domain
Anti-Tumor endothelial marker 8 (TEM8), Poly	GB-30128-36C	Rabbit	100µg	ELISA	purified Ab, EC domain
Anti-Tumor endothelial marker 2 (TEM2), Poly	GB-30131	Rabbit	100µg	ELISA	Purified Ab
Anti-Tumor endothelial marker 3 (TEM3 or plexin domain containing 1), Poly	GB-30132	Rabbit	100µg	ELISA	Purified Ab
Anti-Tumor endothelial marker 4 (TEM4 or Rho guanine nucleotide exchange factor (GEF) 17), Poly	GB-30133	Rabbit	100µg	ELISA	purified Ab, EC domain

Anti-protein tyrosine phosphatase type IVA, member 3 (PRL-3), Mono GB-63023 Rabbit 1.2 ml ELISA, WB Unique, culture medium



Anti-protein tyrosine phosphatase-3, Rabbit Monoclonal Antibody.
T₀: before IPTG induction of the protein expression
T_{2.5}: IPTG induction of the recombinant human PRL-3 (PRL-3, 23.9 kDa) expression for 2.5 hours.
10X dilution of the first antibody: (culture medium).
X-ray film exposed 5 seconds with the ECL kit.

Anti-FLJ23603, Mono	GB-63024	Rabbit	1.2 ml	ELISA	Unique, culture medium
Anti-Matrix metalloproteinase-12 (MMP12), Poly	PY-10168	Chicken	100µg	WB, Tissue and cell staining	Antigen purified Ab
Anti-Matrix metalloproteinase-1 (MMP1), Poly	PY-10174	Chicken	100µg	WB, Tissue and cell staining	Antigen purified Ab

※ G-protein coupled receptor (GPCRs) related antibodies

PRODUCTS	CAT. NO.	HOST	PACKAGE	APPLICATION	NOTE
Anti-cannabinoid receptor 1 (brain) (CNR1), variant 1 (long form), Poly	GB-10386	Rabbit	100µg	ELISA, WB	Purified Ab
Anti-cannabinoid receptor 1 (brain) (CNR1), variant 2 (short form), Poly	GB-10387	Rabbit	100µg	ELISA, WB	Purified Ab
Anti-cannabinoid receptor 2 (macrophage) (CNR2), Poly	GB-10388	Rabbit	100µg	ELISA, WB	Purified Ab
Anti-G protein-coupled receptor 125 (GPR125), Poly	GB-10400	Rabbit	100µg	ELISA	purified Ab
Anti-G protein-coupled receptor 125 (GPR125), Poly	GB-10401	Rabbit	100µg	ELISA	purified Ab
Anti-endothelial differentiation, sphingolipid G-protein-coupled receptor, 4 (EDG4), Poly	GB-10086	Rabbit	100µg	ELISA, WB	Purified Ab
Anti-guanine nucleotide binding protein (G protein), q polypeptide (GNAQ), Poly	GB-30070	Rabbit	100µg	ELISA	Purified Ab
Anti-luteinizing hormone/choriogonadotropin receptor (LHCGR), Poly	GB-30071	Rabbit	100µg	ELISA	Purified Ab
Anti-adrenergic, β-1-, receptor (ADRB1), Poly	GB-30072	Rabbit	100µg	ELISA	Purified Ab
Anti-adrenergic, β-2-, receptor, surface (ADRB2), Poly	GB-30073	Rabbit	100µg	ELISA	Purified Ab
Anti-angiotensin II receptor, type 1 (AGTR1), Poly	GB-30074	Rabbit	100µg	ELISA	Purified Ab
Anti-angiotensin II receptor, type 2 (AGTR2), Poly	GB-30075	Rabbit	100µg	ELISA	Purified Ab
Anti-arrestin, β 1 (ARRB1), Poly	GB-30076	Rabbit	100µg	ELISA, WB	Purified Ab
Anti-arrestin, β 2 (ARRB2), Poly	GB-30077	Rabbit	100µg	ELISA	Purified Ab
Anti-calcitonin receptor (CALCR), Poly	GB-30078	Rabbit	100µg	ELISA	Purified Ab
Anti-calcium-sensing receptor (CASR), Poly	GB-30079	Rabbit	100µg	ELISA	Purified Ab
Anti-chemokine-like receptor 1 (CMKLR1), Rabbit-Poly	GB-30080	Rabbit	100µg	ELISA	Purified Ab
Anti-dopamine receptor D1 (DRD1), Poly	GB-30081	Rabbit	100µg	ELISA	Purified Ab
Anti-dopamine receptor D2 (DRD2), Poly	GB-30082	Rabbit	100µg	ELISA	Purified Ab
Anti-endothelial differentiation, sphingolipid G-protein-coupled receptor, 1 (EDG1), Poly	GB-30083	Rabbit	100µg	ELISA	Purified Ab
Anti-endothelial differentiation, lysophosphatidic acid G-protein-coupled receptor, 2 (EDG2), Poly	GB-30084	Rabbit	100µg	ELISA	Purified Ab
Anti-endothelial differentiation, sphingolipid G-protein-coupled receptor, 3 (EDG3), Poly	GB-30085	Rabbit	100µg	ELISA	Purified Ab
Anti-dopamine receptor D5 (DRD5), Poly	GB-30087	Rabbit	100µg	ELISA, WB	Purified Ab
Anti-thyroid stimulating hormone receptor (TSHR), Poly	GB-30094	Rabbit	100µg	ELISA	Purified Ab
Anti-prostaglandin D2 receptor (DP) (PTGDR), Poly	GB-30096	Rabbit	100µg	ELISA	Purified Ab
Anti-putative chemokine receptor (HM74), Poly	GB-30097	Rabbit	100µg	ELISA	Purified Ab
Anti-glutamate receptor, metabotropic 7 (GRM7), Poly	GB-30101	Rabbit	100µg	ELISA, WB	Purified Ab
Anti-glutamate receptor, metabotropic 2 (Grm2), Poly	GB-30102	Rabbit	100µg	ELISA	Purified Ab
Anti-opioid receptor, kappa 1 (OPRK1), Poly	GB-30103	Rabbit	100µg	ELISA, WB	Purified Ab
Anti-endothelial differentiation, sphingolipid G-protein-coupled receptor, 5 (EDG5),	GB-30104	Rabbit	100µg	ELISA	Purified Ab
Anti-glutamate receptor, metabotropic 8 (Grm8), Poly	GB-30105	Rabbit	100µg	ELISA	Purified Ab
Anti-5-hydroxytryptamine (serotonin) receptor 2B, Poly	GB-30110	Rabbit	100µg	ELISA	Purified Ab
Anti-GPR103, Poly	GB-30112	Rabbit	100µg	ELISA	Purified Ab

※ Signal transduction related antibodies

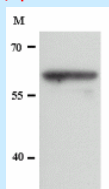
PRODUCTS	CAT. No.	HOST	PACKAGE	APPLICATION	NOTE
Anti-CD34, Poly	PY-10072	Chicken	100µg	WB, Tissue and cell staining	Antigen purified Ab
Anti-CD30 (Ki-1 Antigen), Poly	PY-10096	Chicken	100µg	WB, Tissue and cell staining	Antigen purified Ab
Anti- Cyclin-dependent kinase inhibitor 1A (p21), Poly	PY-10097	Chicken	100µg		
Anti-IκB kinase beta subunit (IKK2), Poly	PY-10098	Chicken	100µg		
Anti-TRAF family member-associated NFKB activator (TANK), Poly	PY-10099	Chicken	100µg		
Anti-Janus kinase 1 (JAK1), Poly	PY-10153	Chicken	100µg	WB, Tissue and cell staining	Antigen purified Ab
Anti-serine / threonine protein kinase (AKT), Poly	PY-10176	Chicken	100µg	WB, Tissue and cell staining	Antigen purified Ab
Anti-tumor necrosis factor receptor superfamily, member 6 isoform 1 (FAS), Poly	PY-10177	Chicken	100µg	WB, Tissue and cell staining	Antigen purified Ab
Anti-serine / threonine protein kinase1 (AKT1), Poly	PY-10178	Chicken	100µg	WB, Tissue and cell staining	Antigen purified Ab
Anti-serine / threonine protein kinase2 (AKT2), Poly	PY-10179	Chicken	100µg	WB, Tissue and cell staining	Antigen purified Ab
Anti-Signal transducer and activator of transcription 1 (STAT1), Poly	PY-10181	Chicken	100µg	WB, Tissue and cell staining	Antigen purified Ab
Anti-STAT1 beta, Poly	PY-10184	Chicken	100µg	WB, Tissue and cell staining	Antigen purified Ab
Anti-STAT6, Poly	PY-10185	Chicken	100µg	WB, Tissue and cell staining	Antigen purified Ab
Anti- Extracellular signal-regulated kinase 3 (ERK3), Poly	PY-10188	Chicken	100µg	WB, Tissue and cell staining	Antigen purified Ab
Anti-STAT4, Poly	PY-10193	Chicken	100µg	WB, Tissue and cell staining	Antigen purified Ab
Anti- Jun kinase, (JNK2), Poly	PY-10198	Chicken	100µg	WB, Tissue and cell staining	Antigen purified Ab
Anti-serine/threonine protein kinase3 (AKT3), Poly	PY-10200	Chicken	100µg	WB, Tissue and cell staining	Antigen purified Ab
Anti- Extracellular signal-regulated kinase 1 (ERK1), Poly	PY-10201	Chicken	100µg	WB, Tissue and cell staining	Antigen purified Ab

※ Second antibodies

PRODUCTS	CAT. No.	HOST	PACKAGE	APPLICATION	NOTE
Anti-Biotin IgG, Poly	GB-10018	Rabbit	250µl	ELISA, WB	Purified Ab
Anti-rat IgG, Poly-Biotin	GB-10041B	Rabbit	100µg	ELISA, WB	Purified Ab
Anti-rat IgG, Poly-HRP	GB-10041H	Rabbit	100µg	ELISA, WB	Purified Ab
Anti-chicken IgY, HRP label, Poly	PY-10266	Rabbit	100µg		
Chicken total IgY, negative control	PY-10273		1000µg	for negative control	total IgY

※ SARS related antibodies

PRODUCTS	CAT. No.	HOST	PACKAGE	APPLICATION	NOTE
Anti-SARS Virus Nucleocapsid Protein, pAb	GB-10139	Mouse	100µl	ELISA, WB, Epitope mapping	antiserum



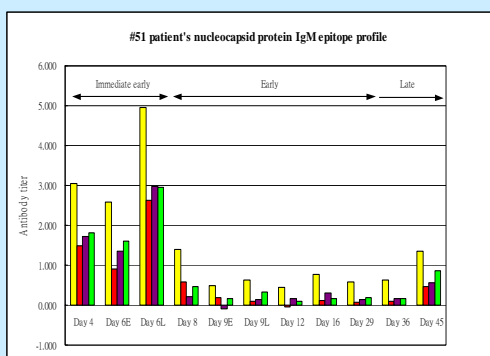
Anti-Severe Acute Respiratory Syndrome (SARS)-CoV nucleocapsid protein, mouse polyclonal antibody. Western blot analysis of recombinant nucleocapsid protein with GB-10139.

Anti-SARS Virus Nucleocapsid Protein, Poly	GB-10168M	Rabbit	250µl	ELISA, WB	Serum
Anti-SARS Virus Protein X2 (SARS 3b), Poly	GB-10230M	Rabbit	250µl	ELISA	Serum
Anti-SARS Virus Spike Protein, Poly	GB-10311M	Rabbit	250µl	ELISA	Serum, S1 region
Anti-SARS Virus Spike Protein, Poly	GB-10314M	Rabbit	250µl	ELISA	Serum, S1 region
Anti-SARS Virus Spike Protein, Poly	GB-10322M	Rabbit	250µl	ELISA	Serum, S2 region
Anti-SARS Virus Spike Protein, Poly	GB-10326M	Rabbit	250µl	ELISA	Serum, S2 region
Anti-SARS Virus Spike Protein, Poly	GB-10333M	Rabbit	250µl	ELISA	Serum, S2 region
Anti-SARS Virus Nucleocapsid Protein, mAb	GB-51139	Mouse	100µl	ELISA	Ascites
Anti-SARS Virus Nucleocapsid Protein, Mono	GB-61170	Rabbit	1.2 ml	ELISA, WB	Unique, culture medium

SARS-CoV ELISA kit	GB-7003	44 tests/kit	for antibody detection
--------------------	---------	--------------	------------------------



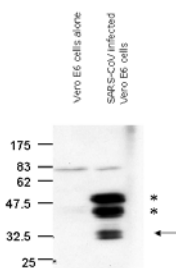
SARS-CoV antibody ELISA kit coated with synthetic peptides comprise the epitope profile defined from SARS-CoV infected patients' serum and the other negative controls (Patent pending). This kit is used for the detection of SARS-CoV antibody (IgG).



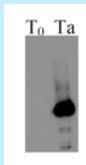
The epitope profile of SARS-CoV nucleocapsid protein (N).

The microtiter plate was coated with 4 overlapping SARS-CoV N synthetic peptide (A, B, C, and D represented as the 4 colored bars of the above figure, which comprise the epitopes identified previously by our peptide array strategy). The ELISA results (O.D.

Anti-SARS 3CL protease, Poly	PG-10001	Rabbit	250µl	WB, IFA	Unique, Serum
------------------------------	----------	--------	-------	---------	---------------



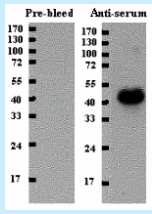
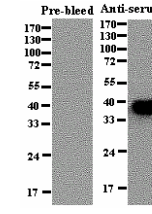
Anti-SARS 3CL protease, Rabbit Polyclonal Antibody. Western blot analysis of the 3CL proteins expressed in the SARS virus-infected Vero E6 cells using rabbit polyclonal antibody PG-10001. The SARS-CoV 3CL-PRO protein was detected on the predicted size (~34 KDa). Aggregated forms of 3CL (*) were also detected.

Anti-SARS 3CL protease, Mono	PG-20001	Mouse	100µl	WB, IFA, Functional blocking (FB)	Unique, Ascites
 <p>Anti-SARS 3CL protease, Mouse Monoclonal Antibody (PG-20001). Western blot analysis of the recombinant 3CL proteins expressed in <i>E. coli</i> using mouse monoclonal antibody PG-20001#3. 10-fold dilution of the cultured medium of the hybridomas was used for WB analysis. The putative 3CL-PRO recombinant protein (synonym: non-structural protein 2(nsp2)) after IPTG induction was detected on the predicted size (~34 KDa).</p>					
Anti-SARS 3CL protease, Mono	PG-20002	Mouse	100µl	WB, IFA, Functional blocking (FB)	Unique, Ascites
Anti-SARS 3CL protease, Mono	PG-20003	Mouse	100µl	WB, IFA, Functional blocking (FB)	Unique, Ascites
Anti-SARS-CoV spike protein, Mono	PG-20026	Mouse	100µl	WB	culture supernatant
Anti-SARS-CoV nucleocapsid protein, Mono	PG-20027	Mouse	100µl	WB	culture supernatant
Anti-SARS-CoV nucleocapsid protein, Mono	PG-20028	Mouse	100µl	WB	culture supernatant

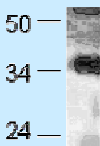
✧ Growth factor related antibodies

PRODUCTS	CAT. No.	HOST	PACKAGE	APPLICATION	NOTE
Anti-Vascular endothelial growth factor (VEGF), Poly	GB-10050	Rabbit	250µl	ELISA	Serum
Anti-Growth hormone (eel GH), Poly	GB-10058	Rabbit	250µl	WB	Unique, serum
Anti-Glycoprotein hormone alpha subunit (eel), Poly	GB-10059	Rabbit	250µl	WB	Unique, serum
Anti-epidermal growth factor (EGF), Poly	GB-10357	Rabbit	250µl	ELISA, WB	Serum
Anti-β-lactoglobulin (β-LG) , Poly	GB-10414	Rabbit	100µg	ELISA	affinity purified Ab
Anti-Vascular endothelial growth factor receptor-3 (VEGFR3), Poly	GB-30015	Rabbit	250µl	ELISA, IHC	Serum
Anti-Haptoglobulin α, Mono	PG-20010	Mouse	100µl	WB	ascites
Anti-Haptoglobulin β, Mono	PG-20011	Mouse	100µl	WB	ascites
Anti-β-lactoglobulin (β-LG) native form, Mono	PG-20012	Mouse	100µl	WB	ascites
Anti-β-lactoglobulin (β-LG) native form, Mono	PG-20013	Mouse	100µl	WB	ascites
Anti-β-lactoglobulin (β-LG) denatured form, Mono	PG-20014	Mouse	100µl	WB	ascites
Anti-β-lactoglobulin (β-LG) denatured form, Mono	PG-20015	Mouse	100µl	WB	ascites
Anti-Vascular endothelial growth factor (VEGF), Poly	PY-10031	Chicken	100µg	ELISA, WB, Tissue and cell staining	Antigen purified Ab
Anti-VEGF receptor tyrosine kinase (VEGFR), Poly	PY-10032	Chicken	100µg	ELISA, WB, Tissue and cell staining	Antigen purified Ab
Anti-Erythropoietin (EPO), Poly	PY-10218	Chicken	100µg	ELISA, WB, Tissue and cell staining	Antigen purified Ab
Anti-FGFR1 oncogene partner (FGFR1OP), Poly	PY-10229	Chicken	100µg	ELISA, WB, Tissue and cell staining	Antigen purified Ab
Anti-Connective tissue growth factor (CTGF), Poly	PY-10242	Chicken	100µg	ELISA, WB, Tissue and cell staining	Antigen purified Ab
Anti- v-erb-b2 erythroblastic leukemia viral oncogene homolog 2 (Her2/neu), Poly	PY-10254	Chicken	100µg	ELISA, WB, Tissue and cell staining	Antigen purified Ab
Anti- insulin-like growth factor binding protein 6 (IGFBP6), Poly	PY-10255	Chicken	100µg	ELISA, WB, Tissue and cell staining	Antigen purified Ab

※ Human disease related antibodies

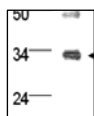
PRODUCTS	CAT. NO.	HOST	PACKAGE	APPLICATION	NOTE
Anti-Influenza A Virus Matrix Protein M1, Poly	GB-10083M	Rabbit	250µl	ELISA	Serum, homologous in human, swine, chicken, etc.
Anti-flagellin, Poly	GB-10354	Rabbit	250µl	ELISA, WB	Unique, serum
Anti-Sigma 38 of <i>Serratia marcescens</i> , Poly	GB-10391	Rabbit	100µg	WB	
 <p>Anti-Sigma 38 of <i>Serratia marcescens</i>, Rabbit polyclonal antibody Western blot analysis of Sigma 38 protein (MW.44 Kda) with GB-10391</p>					
Anti-Sigma 32 of <i>Serratia marcescens</i> , Poly	GB-10392	Rabbit	100µg	WB	
 <p>Anti-Sigma 32 of <i>Serratia marcescens</i>, Rabbit polyclonal antibody Western blot analysis of Sigma 32 protein (MW.38 Kda) with GB-10392</p>					
Anti-vaccinia virus fusion protein (14K, A27L), Poly	GB-10396	Rabbit	100µg	ELISA	homologous with the counterparts of Cowpox virus, Variola virus, Camelpox virus, Monkeypox virus, Ectromelia virus.
Anti-vaccinia virus fusion protein (14K, A27L), Poly	GB-10397	Rabbit	100µg	ELISA	homologous with the counterparts of Cowpox virus, Variola virus, Camelpox virus, Monkeypox virus, Ectromelia virus.
Anti-HIV 1 envelope glycoprotein, Poly	GB-10413	Rabbit	100µg	ELISA	purified Ab
Anti-Hepatitis C virus (HCV) E1, Poly	GB-10415	Rabbit	100µg	ELISA	purified Ab
Anti-Hepatitis C virus (HCV) E2, Poly	GB-10416	Rabbit	100µg	ELISA	purified Ab
Anti-Hepatitis C virus (HCV) core protein, Poly	GB-10417	Rabbit	100µg	ELISA	purified Ab
Anti-vaccinia virus H3L, Poly	GB-10432	Rabbit	100µg	ELISA	purified Ab
Anti-vaccinia virus A14L, Poly	GB-10433	Rabbit	100µg	ELISA	purified Ab
Anti-Hepatitis C virus (HCV) E1, Poly	GB-10455	Rabbit	100µg	ELISA	purified Ab
Anti-Influenza A virus HA1 (H3), Poly	GB-10457	Rabbit	250µl	ELISA	antiserum
Anti-Influenza A virus HA2 (H3), Poly	GB-10458	Rabbit	250µl	ELISA	antiserum
Anti-Influenza A Virus Matrix Protein M1, Mono	GB-60083	Rabbit	1.2 ml	ELISA	Unique, culture medium
Anti-Influenza A Virus Matrix Protein M1, Mono	GB-60087	Rabbit	1.2 ml	ELISA	Unique, culture medium
Anti-Dengue Viruses, Poly	PG-10003	Rabbit	250µl	ELISA, IF	DEN1, DEN2, DEN3, DEN4 reactive

Anti-Japanese encephalitis virus, Poly	PG-10004		250µl	ELISA, IF	
Anti-Cholera Toxin, Mono	PG-20005	Mouse	200µl	WB, IP, IF	Unique, Ascites
Anti-Cholera toxin beta subunit, Mono	PG-20006	Mouse	100µl	WB	Ascites
Anti-C-reactive protein (CRP), Mono	PG-20008	Mouse	100µl	WB	ascites
Anti- <i>Helicobacter Pylori</i> , Mono	PG-20016	Mouse	100µl	WB	ascites
Anti- <i>Helicobacter Pylori</i> , Mono	PG-20017	Mouse	100µl	WB	ascites
Anti- <i>Helicobacter Pylori</i> , Mono	PG-20018	Mouse	100µl	WB	ascites
Anti- <i>Helicobacter Pylori</i> , Mono	PG-20019	Mouse	100µl	WB	ascites
Anti- <i>Helicobacter Pylori</i> , Mono	PG-20020	Mouse	100µl	WB	ascites
Anti- <i>Helicobacter Pylori</i> , Mono	PG-20021	Mouse	100µl	WB	ascites
Anti- <i>Helicobacter Pylori</i> , Mono	PG-20022	Mouse	100µl	WB	ascites
Anti- <i>Helicobacter Pylori</i> , Mono	PG-20023	Mouse	100µl	WB	ascites
Anti- <i>Helicobacter Pylori</i> , Mono	PG-20024	Mouse	100µl	WB	ascites
Anti- <i>Helicobacter Pylori</i> , Mono	PG-20025	Mouse	100µl	WB	ascites
Anti-Hepatitis B Core protein, Poly	PY-10144	chicken	100µg	ELISA, WB, Tissue staining	Antigen purified Ab, purified Ab
Anti-Hepatitis B large surface protein, Poly	PY-10145	chicken	100µg	ELISA, WB, Tissue staining	Antigen purified Ab, purified Ab
Anti-EV71 (VP1, VP2 mixture), Poly	PY-10267	chicken	100µg	WB	purified Ab



Anti-EV71 (VP1, VP2 mixture), Chicken Polyclonal Antibody. Western blot analysis of Enterovirus 71, capsid protein VP1 and VP2 with PY-10267.

Anti-EV71 (VP3, VP4 mixture), PY-10268 chicken 100µg WB purified Ab Poly



Anti-EV71 (VP3, VP4 mixture), Chicken Polyclonal Antibody. Western blot analysis of Enterovirus 71, capsid protein VP3 and VP4 with PY-10268.

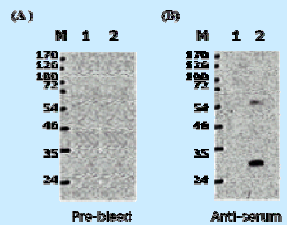
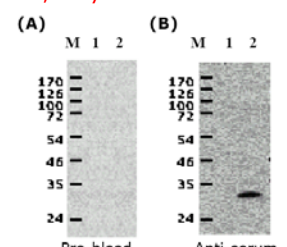
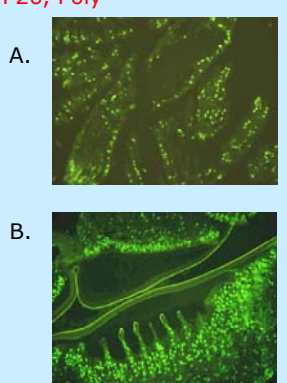
※ Plant related antibodies

PRODUCTS	CAT. No.	HOST	PACKAGE	APPLICATION	NOTE
Anti-methionine sulfoxide reductase domain-containing protein / SeIR domain-containing protein, Poly	GB-10380	Rabbit	100µg	ELISA	Purified Ab
Anti-methionine sulfoxide reductase domain-containing protein / SeIR domain-containing protein, Poly	GB-10381	Rabbit	100µg	ELISA	Purified Ab

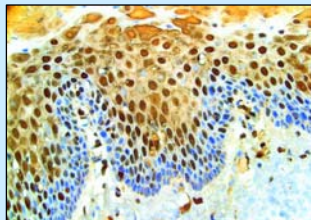
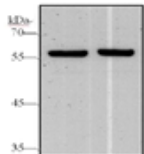
※ Tag antibodies

PRODUCTS	CAT. No.	HOST	PACKAGE	APPLICATION	NOTE
Anti-GST, Mono	GB-52mA1	Mouse	100µg	ELISA, WB	Purified Ab
Anti-GST, Poly	PG-10005	Rabbit	250µl	GST-pull down, IP, ELISA	Purified Ab
Anti-His-tag and Xpress-tag, Poly	PY-10265	Chicken	100µg	WB, Tissue and cell staining	Antigen purified Ab

※ Animal disease related antibodies

PRODUCTS	CAT. No.	HOST	PACKAGE	APPLICATION	NOTE
Anti-White spot syndrome virus (WSSV) VP28, Poly	GB-10006	Rabbit	250µl	ELISA, WB	Serum
 <p>(A) M 1 2 (B) M 1 2</p> <p>170 — 170 — 126 — 126 — 100 — 100 — 92 — 92 — 54 — 54 — 46 — 46 — 35 — 35 — 24 — 24 —</p> <p>Pre-bleed Anti-serum</p> <p>Anti-White spot syndrome virus (WSSV) VP28, Rabbit Polyclonal Antibody. Western blot of WSSV VP28 with GB-10006. Lane1: Control (<i>E. Coli</i> total cell lysate before IPTG induction) Lane2: Recombinant VP28 protein expression after IPTG induction</p>					
Anti-Fish nervous necrosis virus (NNV) coat protein, Poly	GB-10063	Rabbit	250µl	ELISA	Grouper nervous necrosis virus, serum
Anti-Fish nervous necrosis virus (NNV) coat protein, Poly	GB-10064	Rabbit	250µl	ELISA	Grouper nervous necrosis virus, serum
Anti-White spot syndrome virus (WSSV) VP28, Poly	GB-10355	Rabbit	250µl	ELISA, WB	Shrimp white spot syndrome virus, serum
 <p>(A) M 1 2 (B) M 1 2</p> <p>170 — 170 — 126 — 126 — 100 — 100 — 92 — 92 — 54 — 54 — 46 — 46 — 35 — 35 — 24 — 24 —</p> <p>Pre-bleed Anti-serum</p> <p>Anti-White spot syndrome virus (WSSV) VP28, Rabbit Polyclonal Antibody. Western blot of WSSV VP28 with GB-10355. Antigen: This polyclonal antibody was raised by immunizing rabbit with a synthetic peptide located on the VP 28 central domain (69-148) of shrimp WSSV. Lane1: Control (<i>E. Coli</i> total cell lysate before IPTG induction) Lane2: recombinant VP28 protein expression after IPTG induction</p>					
Anti-White spot syndrome virus (WSSV) VP664 (ORF167), Poly	GB-10372	Rabbit	100µg	ELISA, IFA, WB	Purified Ab
Anti-Iridovirus capsid protein, Poly	GB-10373	Rabbit	100µg	ELISA	Purified Ab
Anti-fusion protein p10 [Avian orthoreovirus], Poly	GB-10378	Rabbit	100µg	ELISA	Purified Ab
Anti-p17 [avian reovirus], Poly	GB-10379	Rabbit	100µg	ELISA	Purified Ab
Anti-White spot syndrome virus (WSSV) VP26, Poly	GB-10382	Rabbit	100µg	ELISA, IFA, WB	Purified Ab
 <p>A. B.</p> <p>VP26 protein is one of the nucleocapsids associated structural proteins of shrimp white spot syndrome virus (WSSV). The VP26 and VP24 of WSSV were found associated with nucleocapsids. The immunofluorescent (IF) staining was performed with rabbit anti-VP26 of WSSV polyclonal antibody (GB-10382): 1/100 dilution for primary antibody, the 2nd antibody is goat anti-rabbit IgG-FITC. The green fluorescent spots are positive signals, which indicated the WSSV infection status. The IF staining of the WSSV infected shrimp with the anti-VP26 of WSSV, Rabbit polyclonal antibody (GB-10382): (A) the gill infected with WSSV, at the upper left, the others are epithelial cells of the appendage foot, (B) the gut infected with WSSV.</p>					
Anti-major capsid protein [fish iridovirus], Poly	GB-10420	Rabbit	100µg	ELISA	purified Ab
Anti-Fish nervous necrosis virus (NNV) particles, Poly	PG-10002	Rabbit	100µg	ELISA, WB, Virus Neutralization (VN)	Unique, purified antibody (Ab)
Anti-Sigma C (avian reovirus), Mono	PG-20009	Mouse	100µl	WB, IFA	ascites

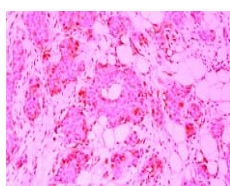
※ Oxidative stress, DNA damage, and apoptosis

PRODUCTS	CAT. NO.	HOST	PACKAGE	APPLICATION	NOTE
Anti-8-OH dG, Mono	GB-52004	Mouse	100µg	ELISA, IHC	Unique, purified Ab
					Immunohistochemistry (IHC) staining of hamster oral epithelial cancerous tissue with anti-8-hydroxy-2'-deoxyguanosine (8-OHdG) mouse monoclonal antibody GB-52004. It shows that this monoclonal antibody not only can stain the DNA damage in cytoplasm but also in the nuclear.
Anti-Glucose-6-phosphate dehydrogenase (G6PD), Poly	PG-10468	Rabbit	100µl	ELISA, WB	antiserum
					Anti-Glucose-6-phosphate dehydrogenase (G6PD), Rabbit Polyclonal Antibody. Western blot of recombinant G6PD protein with PG-10468.
Anti-Toll-like receptor 7 (TLR7), Poly	PY-10148	Chicken	100µg		
Anti-Cytokeratin 8 (KRT8), Poly	PY-10149	Chicken	100µg	WB, Tissue and cell staining	Antigen purified Ab
Anti-Cytokeratin 18 (KRT18), Poly	PY-10150	Chicken	100µg	WB, Tissue and cell staining	Antigen purified Ab
Anti-BCL2-binding protein (BAD), Poly	PY-10151	Chicken	100µg	WB, Tissue and cell staining	Antigen purified Ab
Anti-Toll-like receptor 2 (TLR2), Poly	PY-10152	Chicken	100µg		
Anti-Toll-like receptor 3 (TLR3), Poly	PY-10154	Chicken	100µg	WB, Tissue and cell staining	Antigen purified Ab
Anti-Toll-like receptor 9 isoform A (TLR9), Poly	PY-10155	Chicken	100µg	WB, Tissue and cell staining	Antigen purified Ab
Anti-DNA (cytosine-5-) - methyltransferase 1 (DNMT1), Poly	PY-10156	Chicken	100µg	WB, Tissue and cell staining	Antigen purified Ab
Anti- DNA cytosine methyltransferase 3 α isoform (DNMT3α), Poly	PY-10157	Chicken	100µg	WB, Tissue and cell staining	Antigen purified Ab
Anti-methyl CpG binding protein 2 (MeCP2), Poly	PY-10158	Chicken	100µg	WB, Tissue and cell staining	Antigen purified Ab
Anti- Discs large homolog 7 (HURP), Poly	PY-10159	Chicken	100µg	WB, Tissue and cell staining	Antigen purified Ab
Anti-Estrogen receptor 2 (ESR2), Poly	PY-10160	Chicken	100µg	WB, Tissue and cell staining	Antigen purified Ab
Anti-Enolase 1 (NSE), Poly	PY-10163	Chicken	100µg	WB, Tissue and cell staining	Antigen purified Ab
Anti-SPARC-like 1 (SPARCL1), Poly	PY-10165	Chicken	100µg	WB, Tissue and cell staining	Antigen purified Ab
Anti-carcinoembryonic antigen-related cell adhesion molecule 7 (CEA7), Poly	PY-10170	Chicken	100µg	WB, Tissue and cell staining	Antigen purified Ab
Anti-BGH3 (TGFB1), Poly	PY-10171	Chicken	100µg	WB, Tissue and cell staining	Antigen purified Ab
Anti-Transcobalamin I precursor (TCN1), Poly	PY-10172	Chicken	100µg	WB, Tissue and cell staining	Antigen purified Ab
Anti-CD44, Poly	PY-10175	Chicken	100µg	WB, Tissue and cell staining	Antigen purified Ab

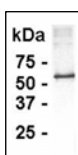
Anti- Glycogen synthase kinase 3 β (GSK-3 β), Poly	PY-10180	Chicken	100 μ g	WB, Tissue and cell staining	Antigen purified Ab
Anti-CD29, Poly	PY-10182	Chicken	100 μ g	WB, Tissue and cell staining	Antigen purified Ab
Anti-CD105, Poly	PY-10183	Chicken	100 μ g	WB, Tissue and cell staining	Antigen purified Ab
Anti-Glycogen synthase kinase 3 α (GSK-3A), Poly	PY-10187	Chicken	100 μ g	WB, Tissue and cell staining	Antigen purified Ab
Anti-methyl-CpG binding domain protein 2 isoform 1 (MBD2), Poly	PY-10189	Chicken	100 μ g	WB, Tissue and cell staining	Antigen purified Ab
Anti-CD14, Poly	PY-10192	Chicken	100 μ g	WB, Tissue and cell staining	Antigen purified Ab
Anti- DNA (cytosine-5-) - methyltransferase 3 β (DNMT3 β), Poly	PY-10202	Chicken	100 μ g	WB, Tissue and cell staining	Antigen purified Ab
Anti-TGFB1-induced anti-apoptotic factor 1(TIAF1), Poly	PY-10203	Chicken	100 μ g		

✧ Cancer related proteins related antibodies

PRODUCTS	CAT. No.	HOST	PACKAGE	APPLICATION	NOTE
Anti-Human Calpastatin, Poly	PY-10012	Chicken	100 μ g	ELISA, WB, Tissue staining	Antigen purified Ab
Anti-Cyclin-dependent kinase inhibitor 2A (CDKN2A), Poly	PY-10026	Chicken	100 μ g	ELISA, WB, Tissue staining	Antigen purified Ab
Anti-TNF-related apoptosis inducing ligand (TRAIL), Poly	PY-10027	Chicken	100 μ g	ELISA, WB, Tissue staining	Antigen purified Ab
Anti-p38_MAPK, Poly	PY-10029	Chicken	100 μ g	ELISA, WB, Tissue staining	Antigen purified Ab
Anti- Ataxia-telangiectasia mutated (ATM), Poly	PY-10030	Chicken	100 μ g	ELISA, WB, Tissue staining	Antigen purified Ab
Anti-Breast cancer 1 (BRCA1), Poly	PY-10034	Chicken	100 μ g	ELISA, WB, Tissue staining	Antigen purified Ab



Immunohistochemistry staining (IHC) of Breast, Infiltrating ductal carcinoma with the PY-10034: anti-Breast cancer 1, chicken IgY (BRCA1 protein affinity purified antibody) (1:20).



Anti-Breast cancer 1(BRCA1), Chicken Polyclonal Antibody.
Western blot of BRCA1 fusion protein with PY-10034. *E coli* derived fusion protein as test antigen. Affinity purified IgY dilution: 1:2000, Goat anti-IgY-HRP dilution: 1:1000. Colorimetric method for signal development.

Anti-E-cadherin, Poly	PY-10037	Chicken	100 μ g	ELISA, WB, Tissue staining	Antigen purified Ab
Anti-F-actin capping protein α -1 subunit (CAPZA1), Poly	PY-10038	Chicken	100 μ g	ELISA, WB, Tissue staining	Antigen purified Ab
Anti-C-myc-1, Poly	PY-10041	Chicken	100 μ g	ELISA, WB, Tissue staining	Antigen purified Ab
Anti-Propionyl-Coenzyme A carboxylase (PCCA), Poly	PY-10042	Chicken	100 μ g	ELISA, WB, Tissue staining	Antigen purified Ab
Anti-Peroxisome Proliferative Activated Receptor Gamma (PPARG), Poly	PY-10049	Chicken	100 μ g	ELISA, WB, Tissue staining	Antigen purified Ab
Anti- α -1-fetoprotein (AFP), Poly	PY-10264	Chicken	100 μ g		

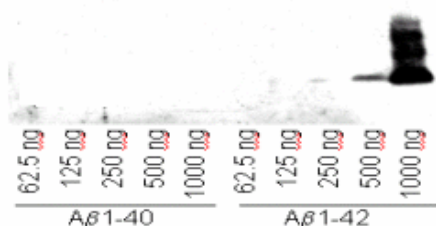
✧ Serum protein related antibodies

PRODUCTS	CAT. No.	HOST	PACKAGE	APPLICATION	NOTE
Anti-Glucose-6-phosphate dehydrogenase (G6PD), Poly	PG-10468	Rabbit	100µl	ELISA, WB	antiserum
Anti-Growth Hormone(GH), Poly	PY-10103	Chicken	100µg	ELISA, WB, Tissue staining	Antigen purified Ab
Anti-Insulin, Poly	PY-10104	Chicken	100µg	ELISA, WB, Tissue staining	Antigen purified Ab, purified Ab
Anti-Albumin, Poly	PY-10105	Chicken	100µg	ELISA, WB, Tissue staining	Antigen purified Ab, purified Ab
Anti-C-Reactive Protein (CRP), Poly	PY-10106	Chicken	100µg	ELISA, WB, Tissue staining	Antigen purified Ab
Anti-IgE, Poly	PY-10111	Chicken	100µg	ELISA, WB, Tissue staining	Antigen purified Ab, purified Ab
Anti-Fibronectin, Poly	PY-10112	Chicken	100µg	ELISA, WB, Tissue staining	Antigen purified Ab
Anti-Leptin, Poly	PY-10114	Chicken	100µg	ELISA, WB, Tissue staining	Antigen purified Ab
Anti-Apolipoprotein A-1 (ApoAI), Poly	PY-10116	Chicken	100µg	ELISA, WB, Tissue staining	purified Ab
Anti-apolipoprotein B precursor (ApoB-100), Poly	PY-10117	Chicken	100µg	ELISA, WB, Tissue staining	Antigen purified Ab
Anti-serum complement C1q, Poly	PY-10118	Chicken	100µg	ELISA, WB, Tissue staining	Antigen purified Ab
Anti-serum complement C3, Poly	PY-10119	Chicken	100µg	ELISA, WB, Tissue staining	Antigen purified Ab
Anti-Haptoglobin, Poly	PY-10125	Chicken	100µg	ELISA, WB, Tissue staining	Antigen purified Ab, purified Ab
Anti-IgA , Poly	PY-10126	Chicken	100µg	ELISA, WB, Tissue staining	Antigen purified Ab
Anti-IgG Fc fragment, Poly	PY-10127	Chicken	100µg	ELISA, WB, Tissue staining	Antigen purified Ab
Anti-IgG, Mouse, Poly	PY-10128	Chicken	100µg	ELISA, WB, Tissue staining	Antigen purified Ab
Anti-IgG, Rabbit, Poly	PY-10129	Chicken	100µg	ELISA, WB, Tissue staining	Antigen purified Ab
Anti-IgM, Human, Poly	PY-10130	Chicken	100µg	ELISA, WB, Tissue staining	Antigen purified Ab
Anti-Ig, Immunoglobulin , light chain k, human, Poly	PY-10131	Chicken	100µg	ELISA, WB, Tissue staining	Antigen purified Ab
Anti-Lipoprotein High Density (HDL), Poly	PY-10132	Chicken	100µg	ELISA, WB, Tissue staining	purified Ab
Anti-Lipoprotein Low Density (LDL), Poly	PY-10133	Chicken	100µg	ELISA, WB, Tissue staining	purified Ab
Anti-Lipoprotein Very Low Density (VLDL), Poly	PY-10134	Chicken	100µg	ELISA, WB, Tissue staining	purified Ab
Anti-human Chorionic Gonadotropin (hCG), Poly	PY-10135	Chicken	100µg		
Anti-transferrin	PY-10139	Chicken	100µg		Antigen purified Ab
Anti-adiponectin, Poly	PY-10204	Chicken	100µg		Antigen purified Ab
Anti-Resistin, Poly	PY-10205	Chicken	100µg		
Anti-Growth hormone releasing peptide (Ghrelin), Poly	PY-10208	Chicken	100µg		
Anti-phospholipase A2, group VII, Poly	GB-10395	Rabbit	100µg	ELISA	Purified Ab

※ Miscellaneous antibodies

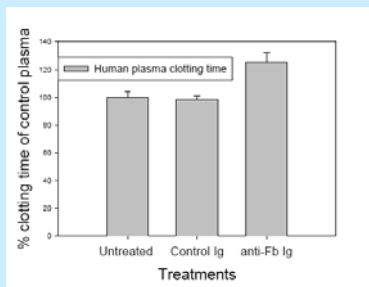
PRODUCTS	CAT. No.	HOST	PACKAGE	APPLICATION	NOTE
Anti-Amyloid β (1-40), Poly	GB-10356	Rabbit	100 μ g	ELISA, WB	protein A purified Ab
Anti-Amyloid β (1-42), Poly	GB-10370	Rabbit	100 μ g	ELISA, WB	peptide affinity purified Ab

Western Blot analysis of Anti-A β 42 (rabbit pAb: GB-10370)



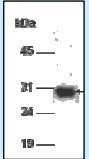
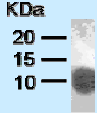
Anti-amyloid β (1-42), Rabbit polyclonal antibody. Western blot analysis of amyloid β (1-40) and amyloid β (1-42) protein with GB-10370.

Anti-human fibrinogen , Poly	PG-10006	Rabbit	250 μ l	ELISA, IP, IF, inhibit plasma clotting (functional blockage)	human, mouse, rat, rabbit reactive
------------------------------	----------	--------	-------------	--	------------------------------------

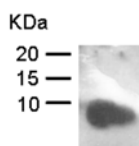


Anti-human fibrinogen, Rabbit Polyclonal Antibody. Plasma clotting inhibited by anti-fibrinogen treatments

Anti-Taxol , Poly	PG-10007	Rabbit	250 μ l	ELISA, IP	
Anti-Taq HotStart Antibody	PG-30007		1 mg		
Anti-Troponin I (8-35), Poly	PY-10206	Chicken	100 μ g	ELISA, WB, Tissue and cell staining	Antigen purified Ab
Anti-Glutamate decarboxylase, 65 kDa isoform, (GAD2) Poly	PY-10209	Chicken	100 μ g	ELISA, WB, Tissue and cell staining	Antigen purified Ab
Anti-Neuropeptide Y (NPY), Poly	PY-10211	Chicken	100 μ g	ELISA, WB, Tissue and cell staining	Antigen purified Ab
Anti-Annexin A10 (65-102), Poly	PY-10213	Chicken	100 μ g	ELISA, WB, Tissue and cell staining	Antigen purified Ab
Anti-Annexin A10 (203-239,short isoform), Poly	PY-10214	Chicken	100 μ g	ELISA, WB, Tissue and cell staining	Antigen purified Ab
Anti-Annexin A10 (33~64), Poly	PY-10215	Chicken	100 μ g	ELISA, WB, Tissue and cell staining	Antigen purified Ab
Anti-Peptide YY-2 (PYY2), Poly	PY-10216	Chicken	100 μ g	ELISA, WB, Tissue and cell staining	Antigen purified Ab
Anti-Peptide YY , PYY-I (PYY), Poly	PY-10217	Chicken	100 μ g	ELISA, WB, Tissue and cell staining	Antigen purified Ab
Anti-Glutamate decarboxylase 1 isoform (GAD1, brain, 67kD), Poly	PY-10219	Chicken	100 μ g	ELISA, WB, Tissue and cell staining	Antigen purified Ab
Anti-Mitochondrial uncoupling protein 3 (UCP3), Poly	PY-10220	Chicken	100 μ g	ELISA, WB, Tissue and cell staining	Antigen purified Ab
Anti-Podocalyxin-like protein 1 precursor (PODXL), Poly	PY-10222	Chicken	100 μ g	ELISA, WB, Tissue and cell staining	Antigen purified Ab
Anti-CD4, Poly	PY-10223	Chicken	100 μ g	ELISA, WB, Tissue and cell staining	Antigen purified Ab
Anti-CD8B1, Poly	PY-10224	Chicken	100 μ g	ELISA, WB, Tissue and cell staining	Antigen purified Ab
Anti-Hepatocyte growth factor receptor precursor (c-Met), Poly	PY-10225	Chicken	100 μ g	ELISA, WB, Tissue and cell staining	Antigen purified Ab

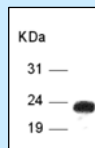
Anti-Osteoprotegerin (OPG), Poly	PY-10226	Chicken	100µg	ELISA, WB, Tissue and cell staining	Antigen purified Ab
Anti-SRY-box-5(SOX5B), Poly	PY-10227	Chicken	100µg	ELISA, WB, Tissue and cell staining	Antigen purified Ab
Anti-Ubiquitin thiolesterase L1 (UCH-L1), Poly	PY-10228	Chicken	100µg	ELISA, WB, Tissue and cell staining	Antigen purified Ab
Anti-Krueppel-like factor 7 (KLF7), Poly	PY-10230	Chicken	100µg	WB, Tissue and cell staining	Antigen purified Ab
 <p>Anti-Krueppel-like factor 7 (KLF7), Chicken Polyclonal Antibody. Western blot of KLF7 fusion protein with PY-10230. Antigen: This polyclonal antibody was raised by immunizing chicken with a KLF7 (1-230 amino acids) fusion protein. The fusion protein was further used for the antigen specific affinity purification of the specific IgY.</p>					
Anti-Cbp/p300-interacting transactivator, with Glu/Asp-rich carboxy-terminal domain (CITED2), Poly	PY-10231	Chicken	100µg	ELISA, WB, Tissue and cell staining	Antigen purified Ab
Anti-G8 protein (C6orf48), Poly	PY-10232	Chicken	100µg	ELISA, WB, Tissue and cell staining	Antigen purified Ab
Anti-CANP protein (GP12), Poly	PY-10233	Chicken	100µg	ELISA, WB, Tissue and cell staining	Antigen purified Ab
Anti-RA-regulated nuclear matrix-associated protein (L2DTL), Poly	PY-10234	Chicken	100µg	ELISA, WB, Tissue and cell staining	Antigen purified Ab
Anti-serine protease inhibitor, Kazal type 1 (PSTI), Poly	PY-10235	Chicken	100µg	ELISA, WB, Tissue and cell staining	Antigen purified Ab
Anti-Transthyretin precursor (TTR), Poly	PY-10237	Chicken	100µg	ELISA, WB, Tissue and cell staining	Antigen purified Ab
Anti-melanoma antigen, family A, 8 (MAGE8), Poly	PY-10239	Chicken	100µg	ELISA, WB, Tissue and cell staining	Antigen purified Ab
Anti-Peroxiredoxin 1 (PRDX1), Poly	PY-10240	Chicken	100µg	ELISA, WB, Tissue and cell staining	Antigen purified Ab
Anti-Thioredoxin, Poly	PY-10241	Chicken	100µg	ELISA, WB, Tissue and cell staining	Antigen purified Ab
Anti-Paraoxonase B-type / arylesterase B-type precursor, Poly	PY-10243	Chicken	100µg	ELISA, WB, Tissue and cell staining	Antigen purified Ab
Anti-Eukaryotic translation initiation factor 3 subunit 12 (eIF3k, HSPC029), Poly	PY-10244	Chicken	100µg	ELISA, WB, Tissue and cell staining	Antigen purified Ab
Anti-HSPB1, heat shock 27kda protein 1 (HSP27), Poly	PY-10245	Chicken	100µg	ELISA, WB, Tissue and cell staining	Antigen purified Ab
Anti-Cation-dependent mannose-6-phosphate receptor precursor (M6PR), Poly	PY-10246	Chicken	100µg	ELISA, WB, Tissue and cell staining	Antigen purified Ab
Anti-Osteopontin (OPN), Poly	PY-10247	Chicken	100µg	ELISA, WB, Tissue and cell staining	Antigen purified Ab
Anti-Pro-opiomelanocortin (POMC), Poly	PY-10253	Chicken	100µg	ELISA, WB, Tissue and cell staining	Antigen purified Ab
Anti-Fucosyltransferase 5 (FUT5), Poly	PY-10258	Chicken	100µg	ELISA, WB, Tissue and cell staining	Antigen purified Ab
Anti-Chemokine (C-X-C motif) ligand 11 (CXCL11), Poly	PY-10260	Chicken	100µg	ELISA, WB, Tissue and cell staining	Antigen purified Ab
Anti-Troponin I (49-92), Poly	PY-10269	Chicken	100µg	ELISA, WB, Tissue and cell staining	Antigen purified Ab
 <p>Anti-Troponin I (49-92), Chicken Polyclonal Antibody. Western blot of troponin with PY-10269. Antigen: This polyclonal antibody was raised by immunizing chicken with a human cardiac troponin I (49-92 amino acids) fusion protein. The fusion protein was further used for the antigen specific affinity purification of the specific IgY.</p>					

Anti-Troponin I (93-122), Poly PY-10270 Chicken 100µg ELISA, WB, Tissue and cell staining Antigen purified Ab



Anti-Troponin I (93-122), Chicken Polyclonal Antibody. Western blot of troponin with PY-10270.
Antigen: This polyclonal antibody was raised by immunizing chicken with a human cardiac troponin I (93-122 amino acids) fusion protein. The fusion protein was further used for the antigen specific affinity purification of the specific IgY.

Anti-Krueppel-like factor 7(KLF7) (aa88-230), Poly PY-10277 Chicken 100µg WB, Tissue and cell staining Antigen purified Ab



Anti- Krueppel-like factor 7 (KLF7) (aa88-230), Chicken Polyclonal Antibody. Western blot of KLF7 fusion protein with PY-10277.
Antigen: This polyclonal antibody was raised by immunizing chicken with a human cardiac troponin I (93-122 amino acids) fusion protein. The fusion protein was further used for the antigen specific affinity purification of the specific IgY.purification of the specific IgY.

※ Subcellular marker protein related antibodies

PRODUCTS	CAT. NO.	HOST	PACKAGE	APPLICATION	NOTE
Anti-Ubiquitin, Chicken-Poly	PY-10136	Chicken	100µg	WB, Tissue staining	Antigen purified Ab
Anti-Laminin, Chicken-Poly	PY-10138	Chicken	100µg	WB, Tissue staining	Antigen purified Ab
Anti-Histone H1, Chicken-Poly	PY-10140	Chicken	100µg	WB, Tissue staining	Antigen purified Ab
Anti-Beta-Actin, Chicken-Poly	PY-10190	Chicken	100µg	WB, Tissue staining	Antigen purified Ab

※ Cytokine protein related antibodies

PRODUCTS	CAT. NO.	HOST	PACKAGE	APPLICATION	NOTE
Anti-interferon-γ, Mono	PG-20007	Mouse	100µl	WB	ascites
Anti-human Tumor Necrosis Factor alpha (TNFα), Poly	PY-10001	Chicken	100µg	ELISA, WB, Tissue staining	Antigen purified Ab
Anti-Interleukin-11, Poly	PY-10002	Chicken	100µg		
Anti-Interleukin-1 beta, Poly	PY-10003	Chicken	100µg	ELISA, WB, Tissue staining	Antigen purified Ab
Anti-Interleukin-8, Poly	PY-10004	Chicken	100µg	ELISA, WB, Tissue staining	Antigen purified Ab
Anti-Interleukin-10, Poly	PY-10005	Chicken	100µg	ELISA, WB, Tissue staining	Antigen purified Ab
Anti-Interleukin-16, Poly	PY-10006	Chicken	100µg	ELISA, WB, Tissue staining	Antigen purified Ab
Anti-Interleukin-17, Poly	PY-10007	Chicken	100µg	ELISA, WB, Tissue staining	Antigen purified Ab
Anti-Interleukin-21, Poly	PY-10008	Chicken	100µg	ELISA, WB, Tissue staining	Antigen purified Ab
Anti-CXC chemokine ligand 16 (CXCL16), Poly	PY-10059	Chicken	100µg	ELISA, WB, Tissue staining	Antigen purified Ab
Anti-Homo sapiens interferon-gamma (IFNγ), Poly	PY-10251	Chicken	100µg	ELISA, WB, Tissue staining	Antigen purified Ab

Expression

Genesis Biotech Inc. features an unique technology of recombinant proteins. We can provide you the following full-range of service to sort out your impediment for any specific gene or protein expression. The system platform leverages on gene cloning , *E. coli* expression, protein production and purification. We only need to know the gene bank accession number or cDNA sequence from you, and it will take 4 to 6 weeks to get your recombinant protein.




PRODUCTS	CAT. No.	PACKAGE	APPLICATION
Gene cloning, expression & protein production	PG-40001	1 plasmid clone & 4 mg His tag fusion protein/project	truncated cDNA cloning & expression in <i>E. coli</i> system, 6weeks
Gene cloning	PG-40002	1 plasmid clone/project	truncated cDNA cloning in <i>E. coli</i> system, 4 weeks
Gene expression & protein purification	PG-40003	expression & 4 mg His tag fusion protein / project	truncated cDNA expression and protein purification in <i>E. coli</i> system, 2 weeks

Molecular Biology-related Products

Genesis Biotech Inc. provides excellent products of molecular biology for life scientists. We provide total RNA isolation kit, which can extract RNA from cell or tissue, and DNA isolation kit, which can extract genomic DNA from whole blood and/or mouth cavity. In addition, we have launched Polymerase Chain Reaction (PCR) related products, including Taq DNA Polymerase, Pfu DNA Polymerase with proof activity, Kleno fragment (Klen Taq DNA Polymerase), Hotstart related products that could reduce nonspecific PCR background, Real-time PCR, one-step RT-PCR kit. merase).



PRODUCTS	CAT. NO.	PACKAGE	APPLICATION
Super RNAPure kit	GB-7001	100 tests / kit	for RNA extraction
 <p>Super RNAPure kit is optimized for isolating and purifying total RNA. It features simple steps, cost-effective and time-saving. This kit works excellent for large amount tissue (over 1 gram) or cell (over 10 million cells). Rather than the traditional method of recovery limitation, the kit can also easily to allow you to get high quality RNA from limited cell sample (1 to 5 x 10⁵) or tissue sample (50 to 100 mg). Super RNAPure is most suitable for plants, yeast and Grams (-) and (+) bacteria. Its simple steps can be applied on large amount of sample at one time. In addition, all steps can be finished within one hour. There is no any DNA or protein contamination on total RNA by using the Super RNAPure kit. Taking this advantage, the RNA can be performed good in Northern blot analysis, in vitro translation, RNase protection assay, RT-PCR, poly (A)+selection, etc.</p>			
GeneCon Kit	GB-7003	700 tests / kit	for DNA in gel isolation
Taq DNA Polymerase	PG-30001	10000 units	
Hotstart Taq DNA Polymerase	PG-30002	1000 reaction	
Pr Taq DNA Polymerase (Taq + Pfu)	PG-30003	1000 reaction	
Hotstart Pr Taq DNA Polymerase (Taq + Pfu)	PG-30004	500 reaction	
KlenTaq DNA Polymerase	PG-30005	1000 reaction	
Hotstart KlenTaq DNA Polymerase	PG-30006	500 reaction	
Anti-Taq HotStart Antibody	PG-30007	500 test	
Anti-Taq HotStart Antibody	PG-30008	200 test	
Real-time PCR kit	PG-30009	1000 reaction	
One Step RT-PCR kit	PG-30010	500 reaction	
Genotyping kit	PG-30012	500 reaction	
PCR kit	PG-30013	1000 reaction	2x reaction concentration
PCR kit with Pfu	PG-30014	1000 reaction	2x reaction concentration
Whole blood DNA extraction kit	PG-30015	20 reaction	
Mouth cavity DNA extraction kit	PG-30016	30 reaction	
Real-time RT-PCR kit	PG-30017	1000 reaction	
Whole blood DNA extraction kit	PG-30018	40 reaction	

Library screening service

Phage display is a technology that allows the presentation of recombinant antibody and peptide libraries on the surface of phage. After several rounds of selection (bio-panning) with the probe, the interactive particles in the phage display library will be isolated. The positively selected phages that specifically bind the probe will be eluted after washing out unbound phages, and then amplified by infecting *E.coli*. The DNA sequencing analysis and binding characterization of the positive phage clones will delineate the identification and characteristics of the isolated interaction partner.



PRODUCTS	CAT. No.	PACKAGE	INFORMATION
Phage-display peptide library screening	GB-9001	report	
Phage-display scFv antibody library screening	GB-9002	report+1-3clones	
Epitope mapping by peptide array (2x24-dots arrays)	GB-9003	report	

Biologically active proteins related products

We have incorporated numerous gene engineering techniques from gene cloning, expression and purification into production line to produce recombinant protein with biological activity. This would be the important source of active material for research and related application. Genesis provides these products including growth factors (cytokines) and serum substitute for serum free cell culture system from the scale of lab to industry.



※ Bioactive proteins

PRODUCTS	CAT. No.	PACKAGE	INFORMATION
IGF-1 (insulin-like growth factor-1)	PG-40001	100 ug	
PDGF-B (platelet-derived growth factor B-chain)	PG-40002	100 ug	
bFGF (basic fibroblast growth factor)	PG-40003	100 ug	
Fibronectin	PG-40004	500 ug	
TNF α (Tumor necrosis factor-alpha)	PG-40005	100 ug	

※ Serum substitute for serum free cell culture system and vaccine production

PRODUCTS	CAT. No.	PACKAGE	INFORMATION
Chemically defined serum substitute for growth phase (Vero)	PG-40013	90 ml/bottle	200 \times for 18L
Chemically defined serum substitute for expression phase (Vero)	PG-40014	90 ml/bottle	200 \times for 18L
Chemically defined serum substitute for growth phase (CHO)	PG-40015	90 ml/bottle	200 \times for 18L
Chemically defined serum substitute for expression phase (CHO)	PG-40016	90 ml/bottle	200 \times for 18L
Chemically defined serum substitute for growth phase (293)	PG-40017	90 ml/bottle	200 \times for 18L
Chemically defined serum substitute for expression phase (293)	PG-40018	90 ml/bottle	200 \times for 18L
Chemically defined serum substitute for growth phase (BHK 21)	PG-40019	90 ml/bottle	200 \times for 18L
Chemically defined serum substitute for expression phase (BHK 21)	PG-40020	90 ml/bottle	200 \times for 18L